

Pool twin Trouble shooter

Pool twin Trouble shooter : What is the problem ?

1 I have a leak

- 1.1 Leaking on / around chlorine dispenser nipple – goto
- 1.2 Leaking on a / around acid dispenser nipple
- 1.3 Leak in/around peristaltic pump
- 1.4 Other leak

2 Instrument is not dosing

- 2.1 Pump(s) turning but no liquid enters the dosing tube
- 2.2 Pump(s) not turning

3 Uncertainty about pH on display : pH does not match pH measured with a color method

- 3.1 Difference in pH $\leq 0,3$ units
- 3.2 Difference in pH $> 0,3$ units

4 Uncertainty about RX on display : Redox on display does not match the chlorine measured with a color method

- 4.1 The chlorine level is much lower than expected from the redox
- 4.2 The chlorine level is much higher than expected from the redox
- 4.3 The Redox measures 00

5 pH or redox electrodes do not calibrate (error when calibrating)

6 pH on display is too low or too high compared to setpoint

- 3.1 pH lower than 5,5 or higher than 8,5
- 3.2 pH is 0,1-0,4 units below or above target

7 redox on display is too low or too high compared to setpoint

- 4.1 Redox is lower than 100 mV
- 4.2 Redox is 1000mV or higher

8 The push buttons do not work work correctly

1.1 Leaking on / around chlorine dispenser nipple

1.2 Leaking on a / around acid dispenser nipple

1.3 Leak in/around peristaltic pump

1.4 Other leak

2.1 Pump(s) turning but no liquid enters the dosing tube

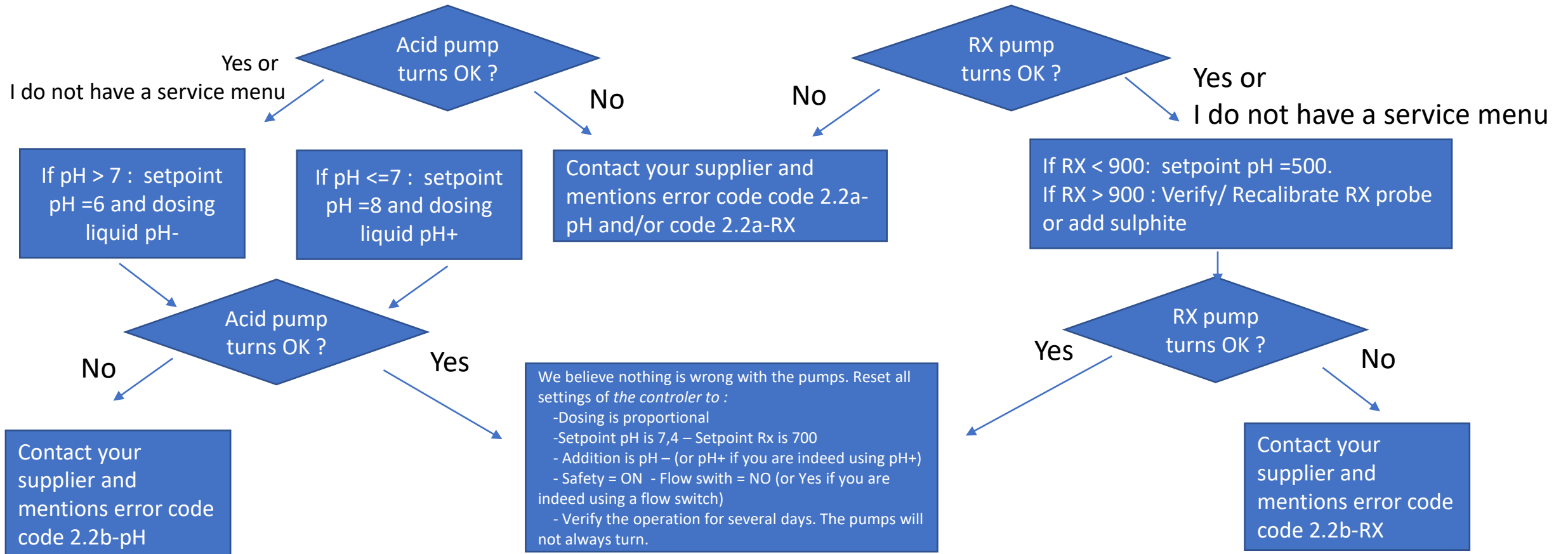
2.2 Pump(s) not turning

Action 1 : Verify that the switch UNDER the blue peristaltic pump is ON

Action 2 : make sure the pH is between 5,6 and 8,4, and redox is below 900mV. If necessary, adjust manually with pH+ or pH- of sulphite (redox reducer). If in doubt, recalibrate electrodes.

Action 3 : select dosing mode = continuous

Test 2.2a : (from 2021 onwards) : Go in the menu to "Service". Enter with password "2121". Press "start acid pump" and start "Chlorine pump".



* If pH < 5,5, or redox > 900 go to page **Pool twin Trouble shooter : What is the problem ?**

3 Uncertainty about pH on display : pH does not match pH measured with a color method

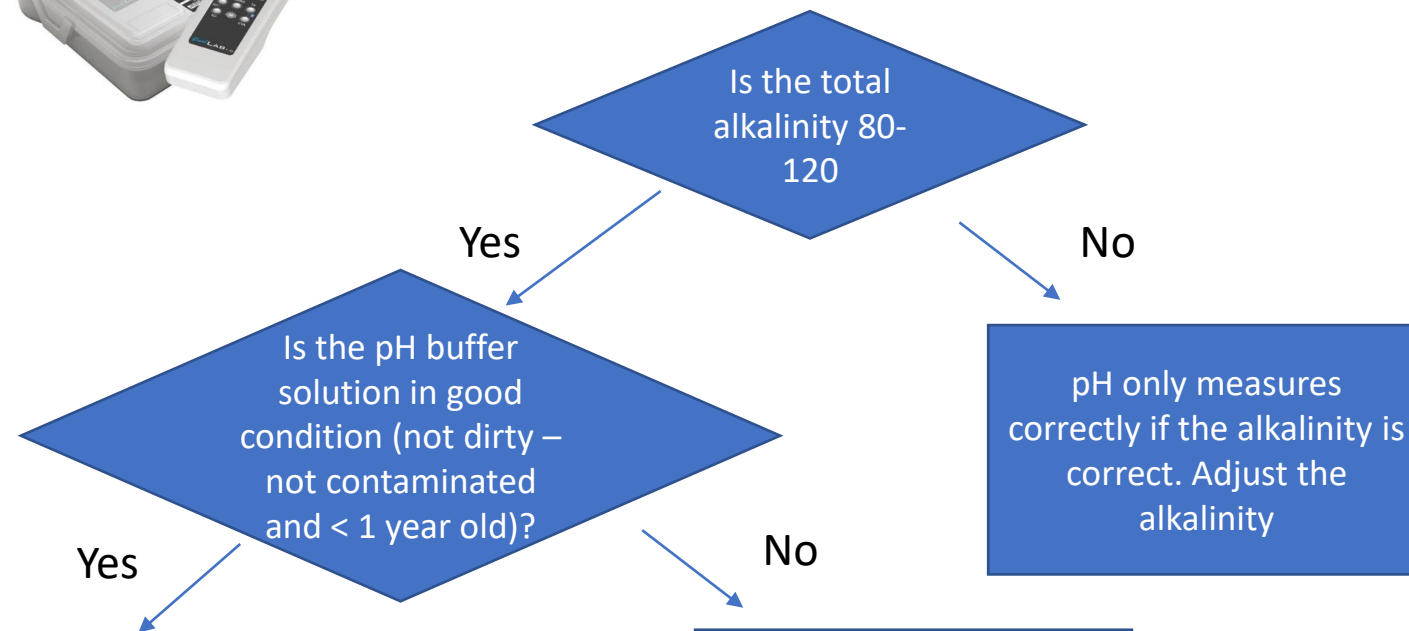
3.1 Difference in pH $\leq 0,3$ units

Action 1 : Measure Total alkalinity with a high quality color method style Poolab.

If you do not have such a instrument : Believe the Pool twin result

Do not use a instrument based on drops of strips such as Aquacheck

OK



Recalibrate and believe the Pool Twin measurement if difference $\leq 0,3$
(PS : This is the advice of supplier of a high quality color measurement). If difference is $\geq 0,4$ goto page 3.2
If pH electrode always measures 7,0 (also in diluted vinegar) : Change electrode and report error 5b

3 Uncertainty about pH on display : pH does not match pH measured with a color method

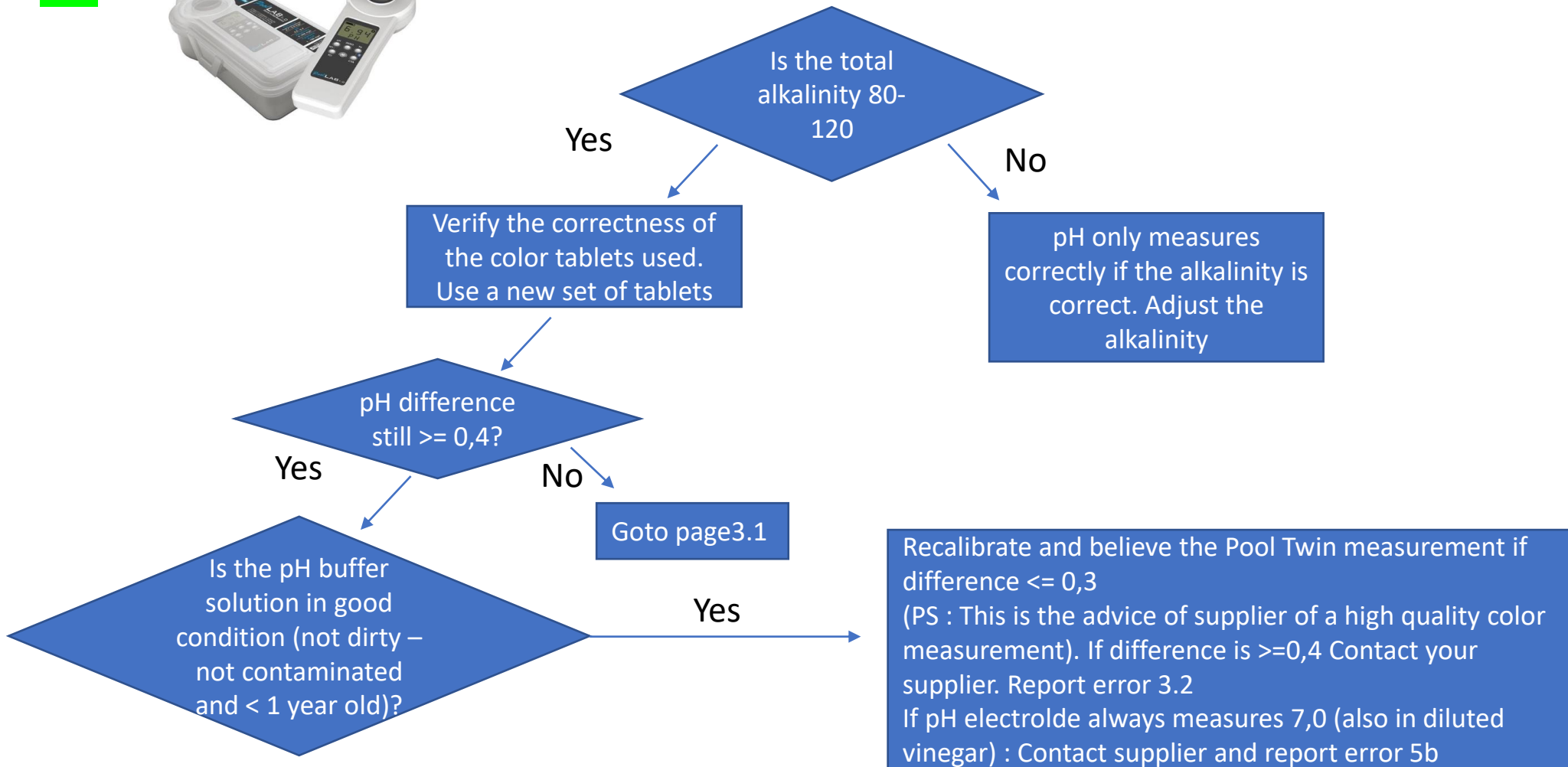
3.2 Difference in pH $\geq 0,4$ units

Action 1 : Measure Total alkalinity with a high quality color method style Poolab.

If you do not have such a instrument : Believe the Pool twin result

Do not use a instrument based on drops of strips such as Aquacheck

OK



4 Uncertainty about RX on display : Redox on display does not match the chlorine measured with a color method

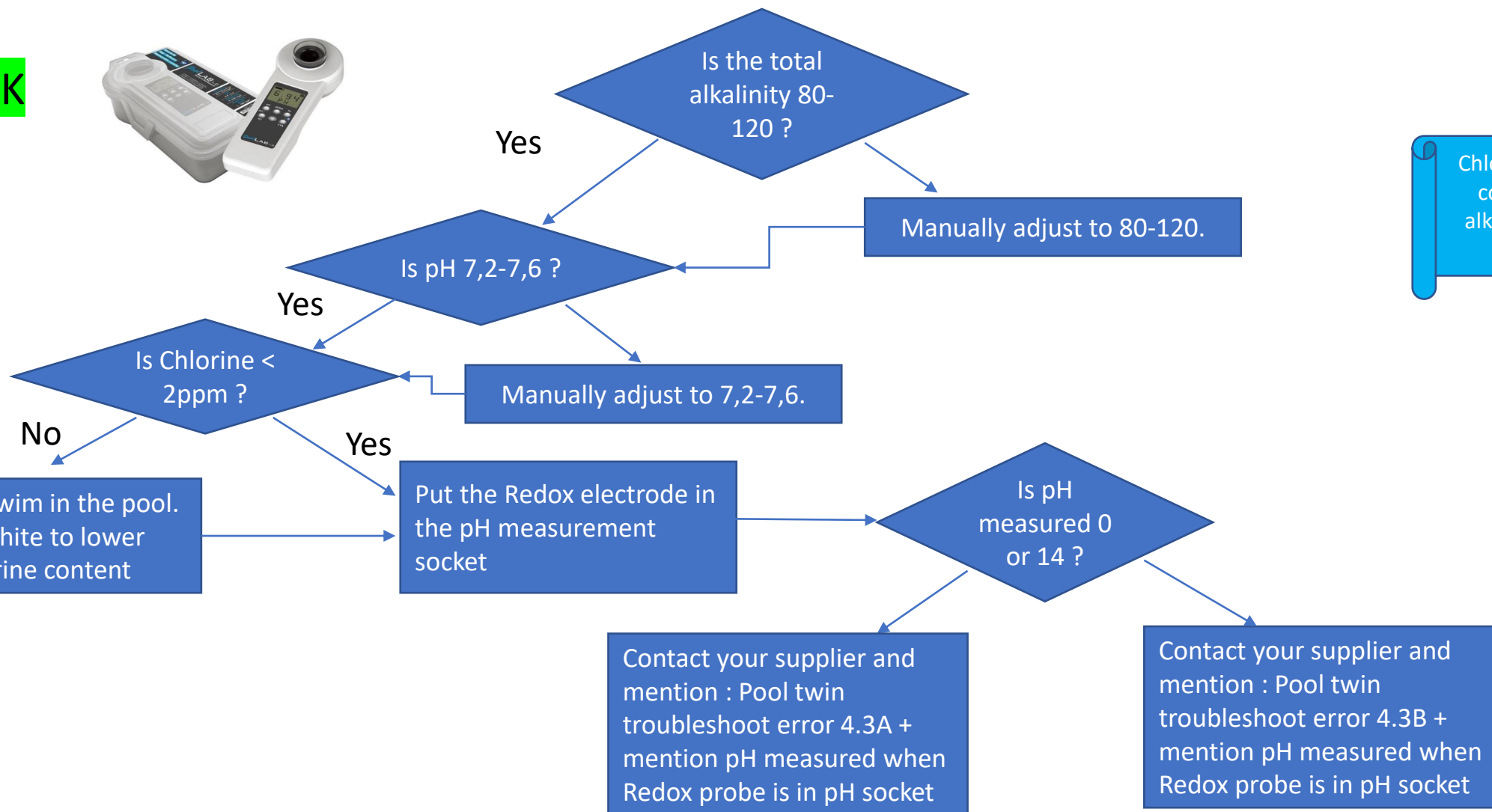
4.3 The Redox measures 00

Action 1 : Measure Total alkalinity / pH and Chlorine level with a high quality color method style Poolab.

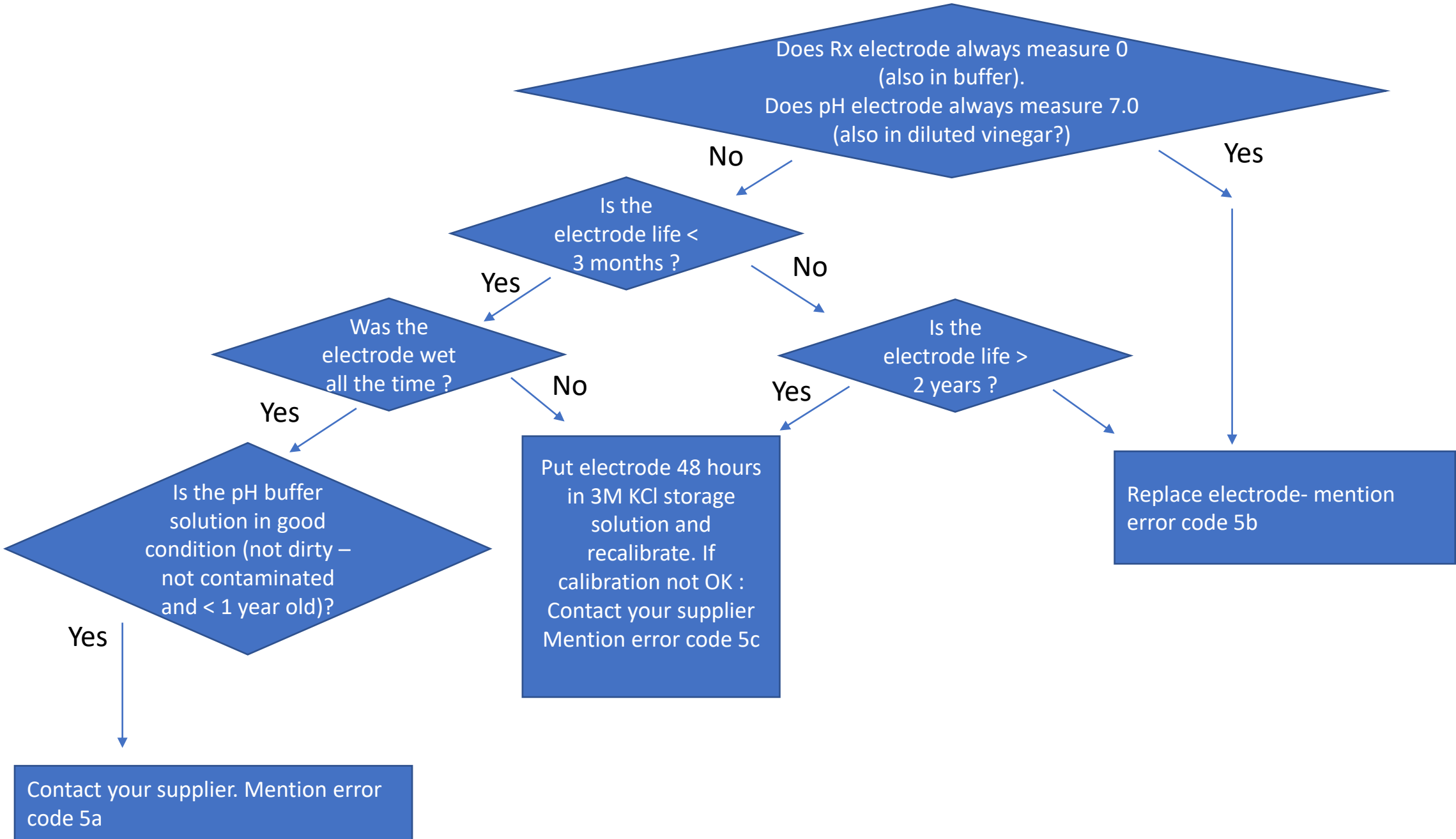
OK



Chlorine measurement is correct only if the alkalinity and pH are correct.



5 pH or redox electrodes do not calibrate (error when calibrating)



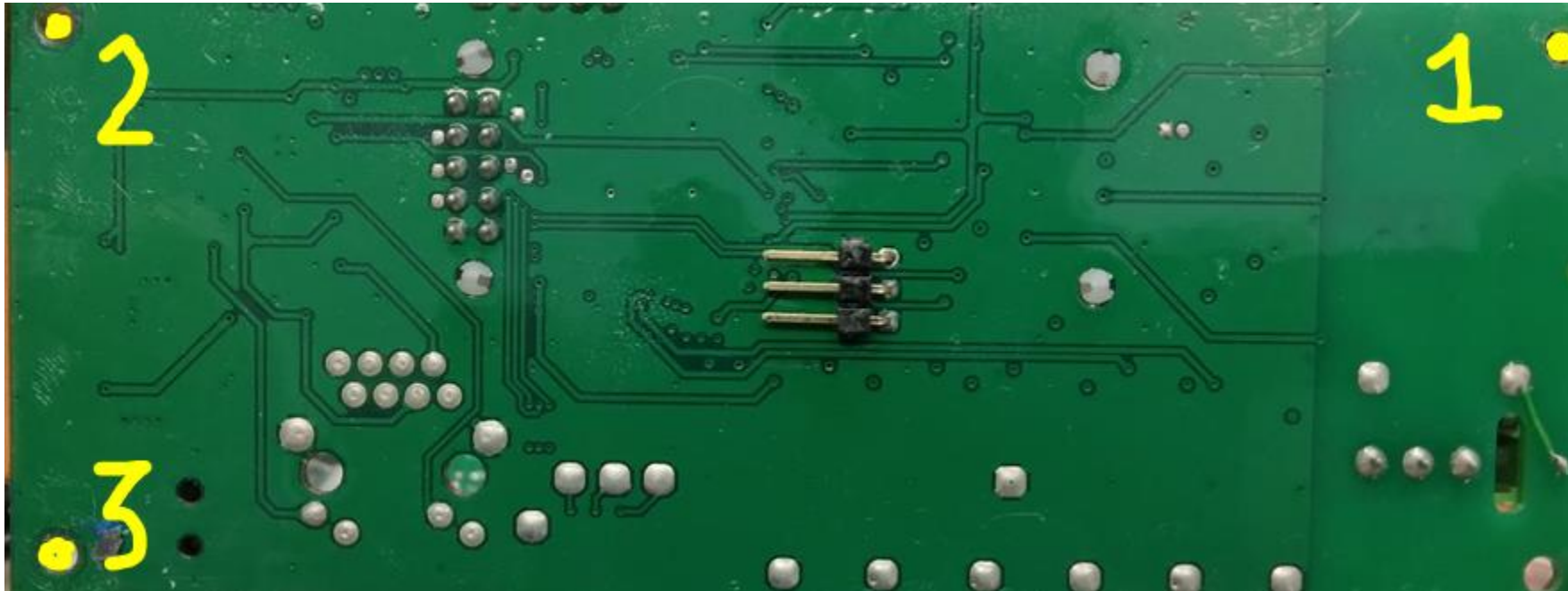
7 Push buttons does not work correctly

Unscrew the blue cover of the control unit

Untighten $\frac{1}{4}$ turn screw 1 and tighten $\frac{1}{4}$ turn screw 2 and 3

If this does not work : repeat the operation once more.

If the buttons stil do not work : contact your supplier, , mentioning error code 7



Is er een probleem met de Peristaltische pomp of met de meting van pH en/of Chloor.

ja

Is er een probleem met de Doorstroming van de Meetcellen ?

ja

Ga naar pag 4 of 5

neen

Kijk de injectie nipples en Aftaknippels na. Deze zijn mogelijk verwisseld
De injectienippels hebben een ingebouwde terugslagklep. De circulatie-aftaknippels hebben geen terugslagklep, en hier kan je in alle richtingen doorblazen.

neen

Doseert het toestel ?

ja

Probleembeschrijving via claim doorgeven

Toestel aan en uit Zetten. Toestel komt In alarm na 4 uur ononderbroken pompen

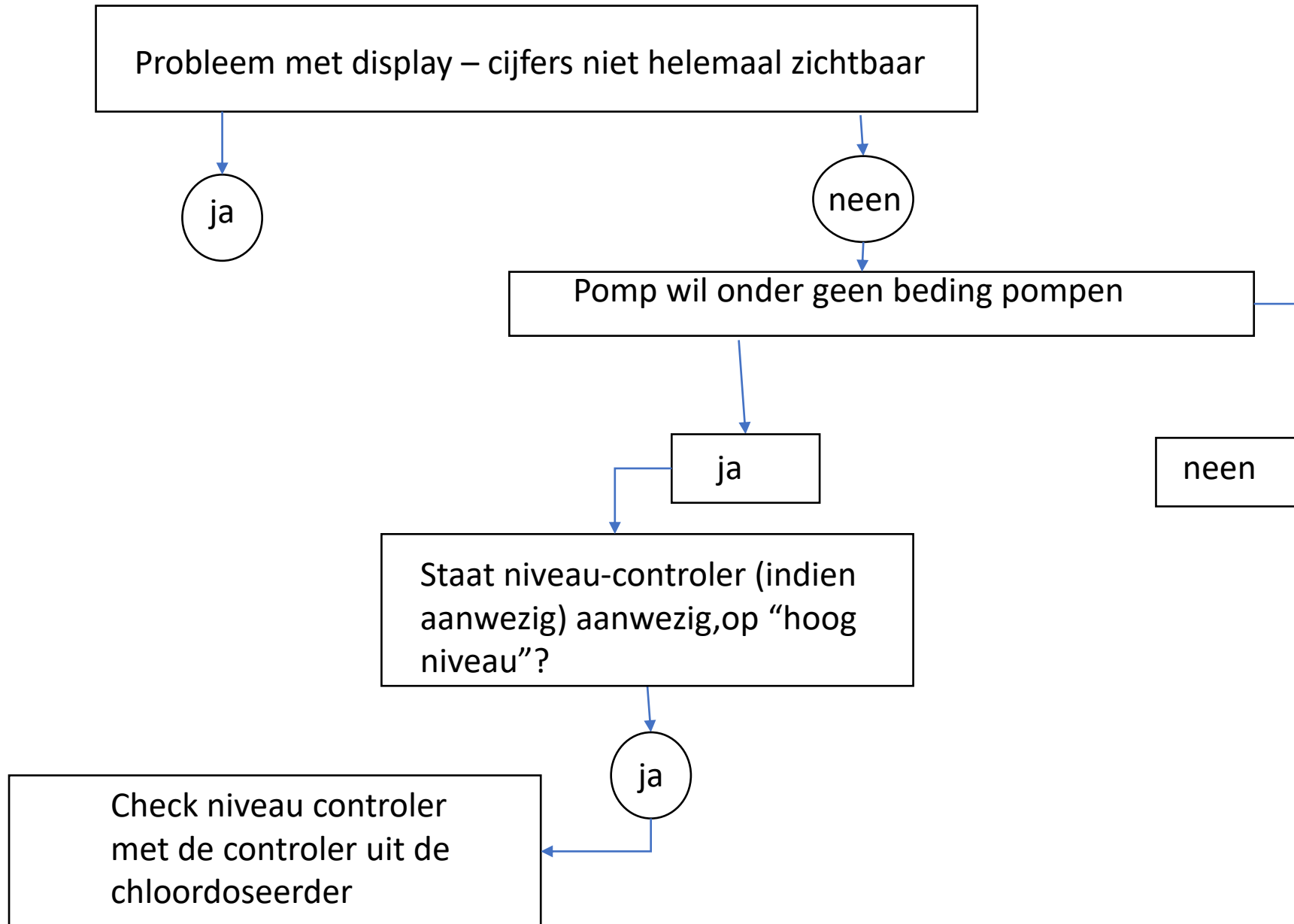
neen

Knippert het alarm ?

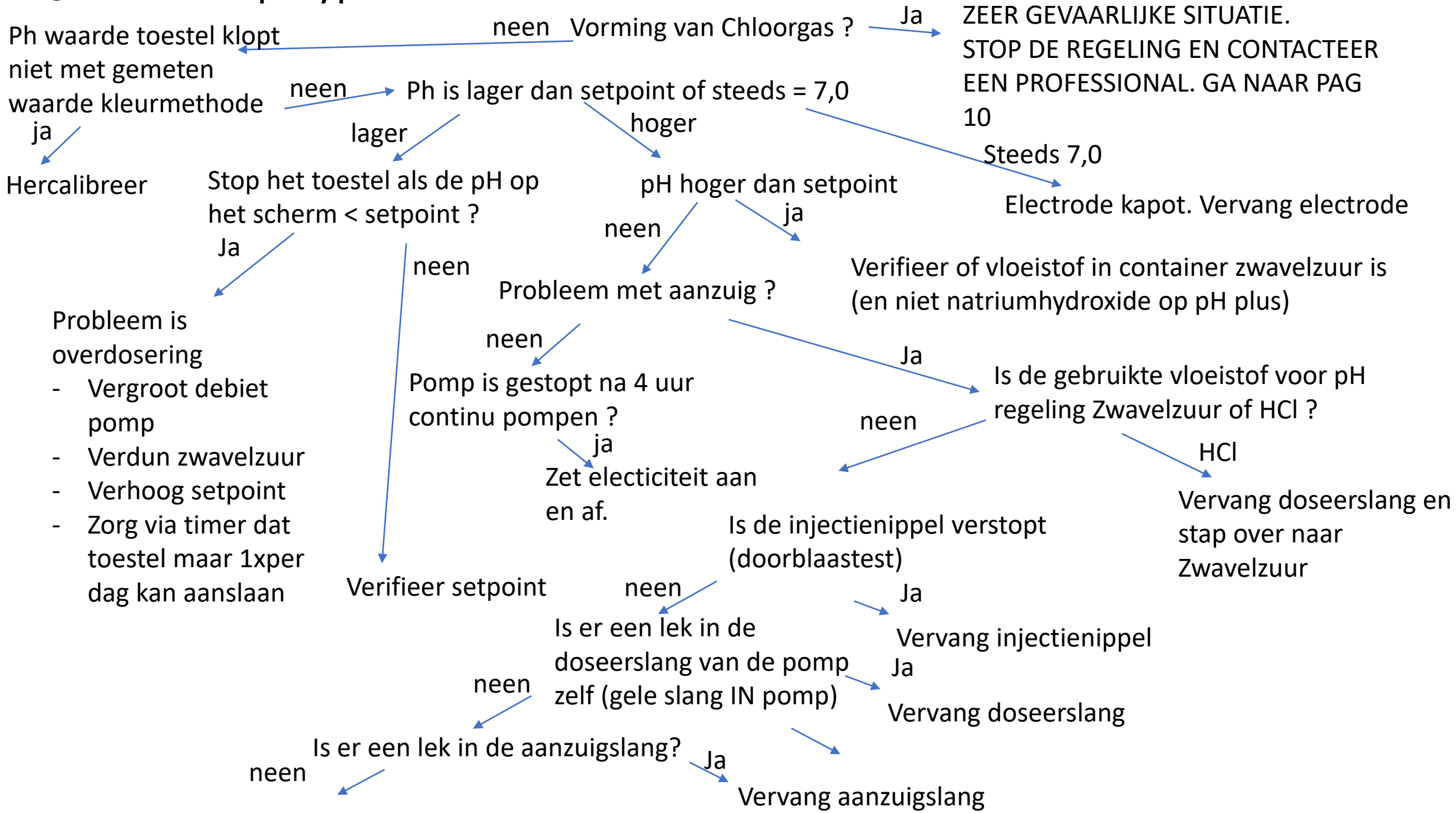
ja

Kijk de niveaudetectie na. Indien de detector "leeg vat" waarneemt, werkt de dosering niet.

neen



Pag 6a Microdos Speedy pH ZWMX2140



Pag 6a Microdos Speedy CI ZWMX2152

