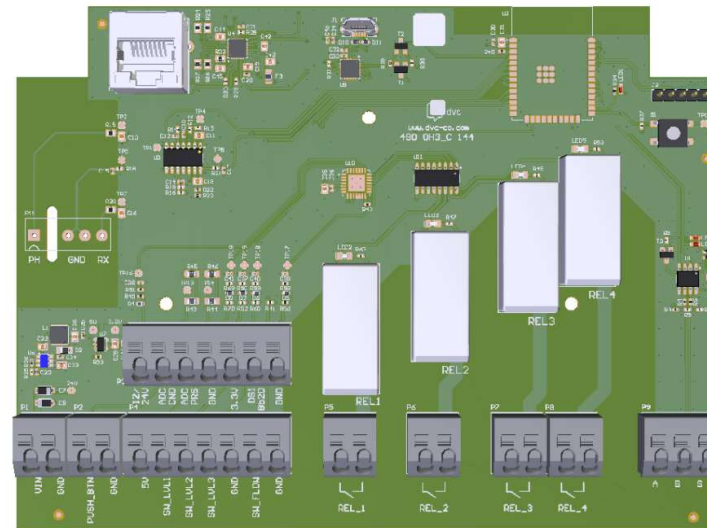
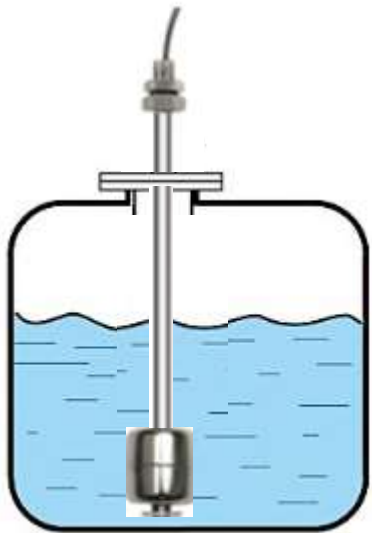


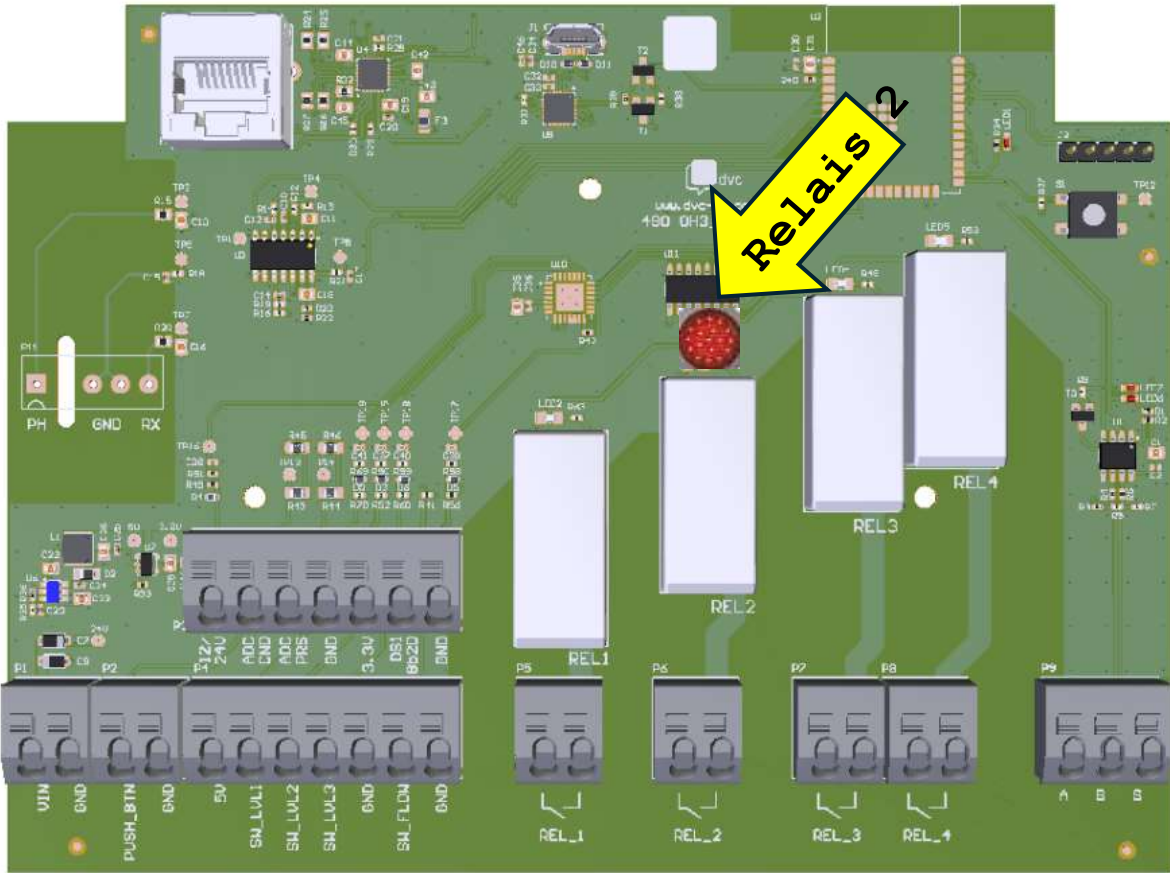
# Wifipool Gen 2

Printplaat  
Aansluitschema's





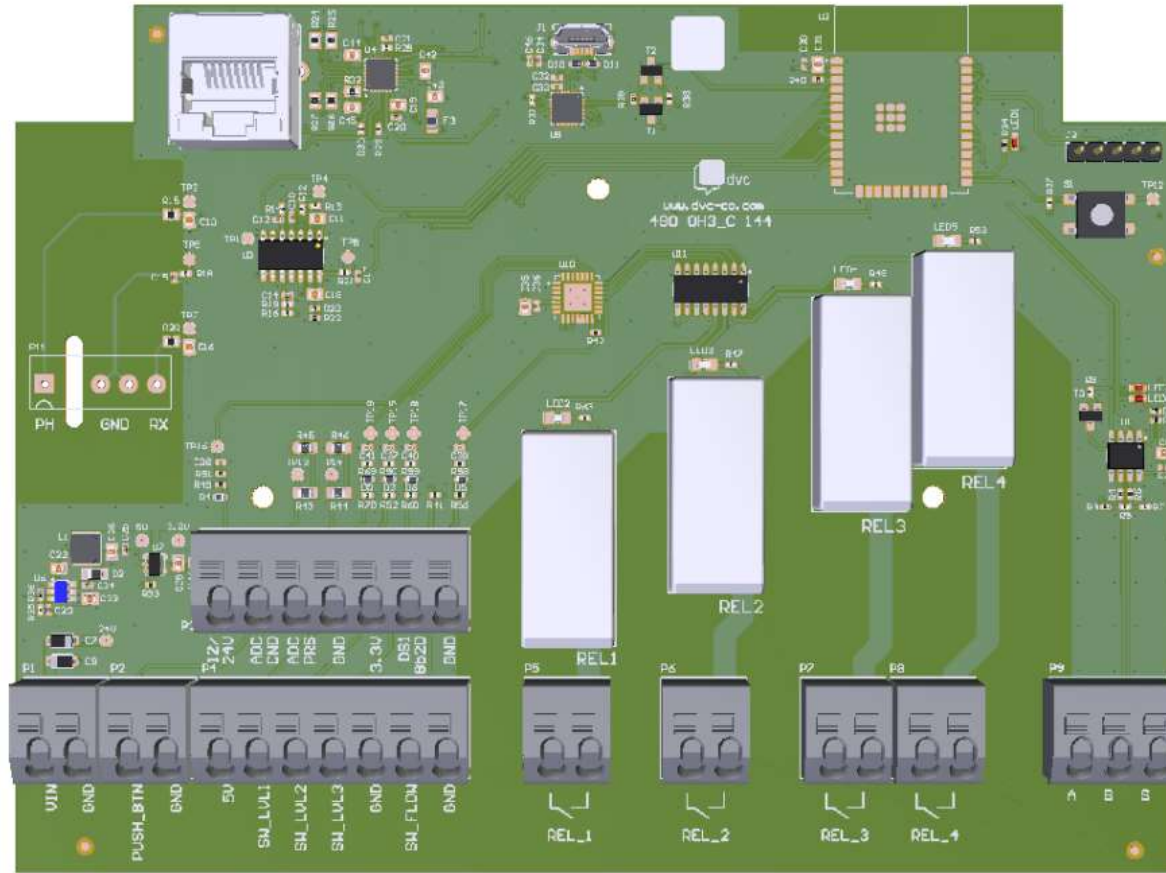
Wifipool Gen 2 Print





# Wifipool Gen 2 Print

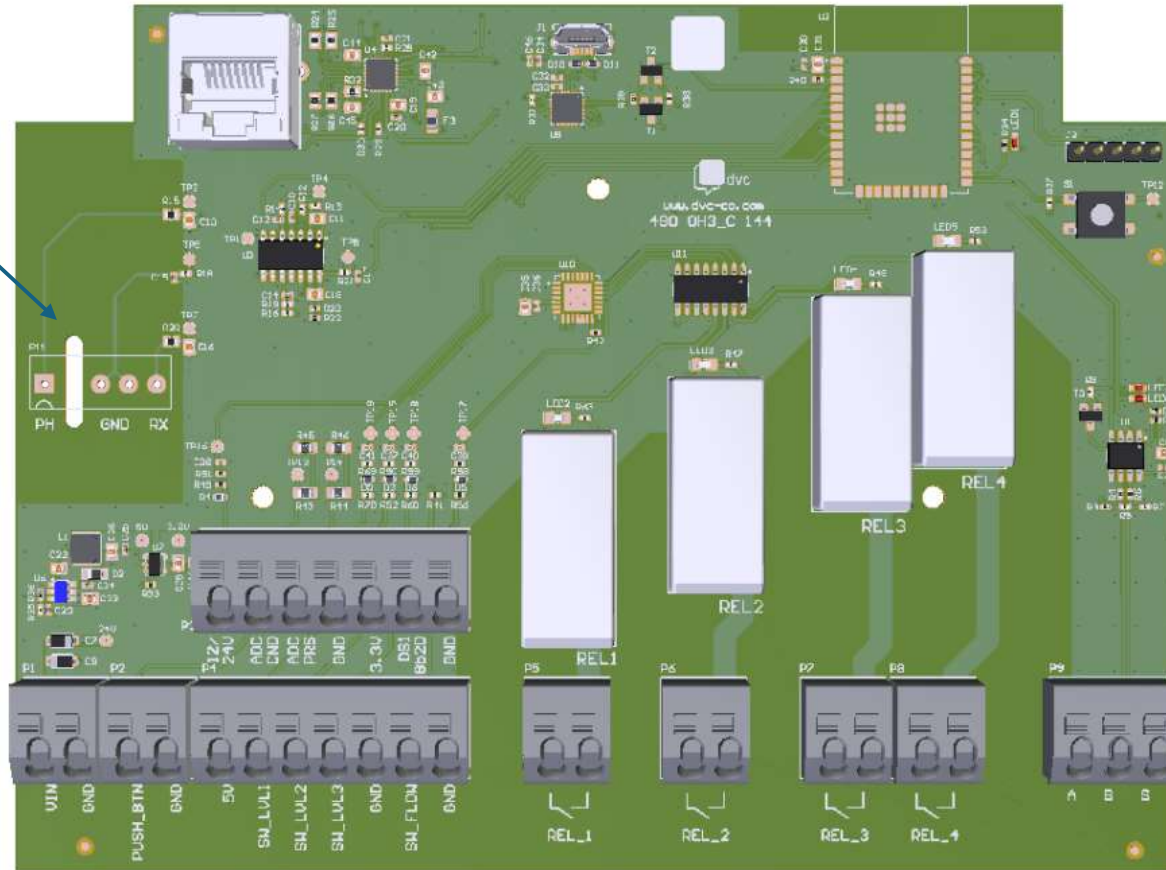
Ethernet-aansluiting Wifimodule



# Wifipool Gen 2 Print

Ethernet-aansluiting Wifimodule

Aansluiting  
pH en RX

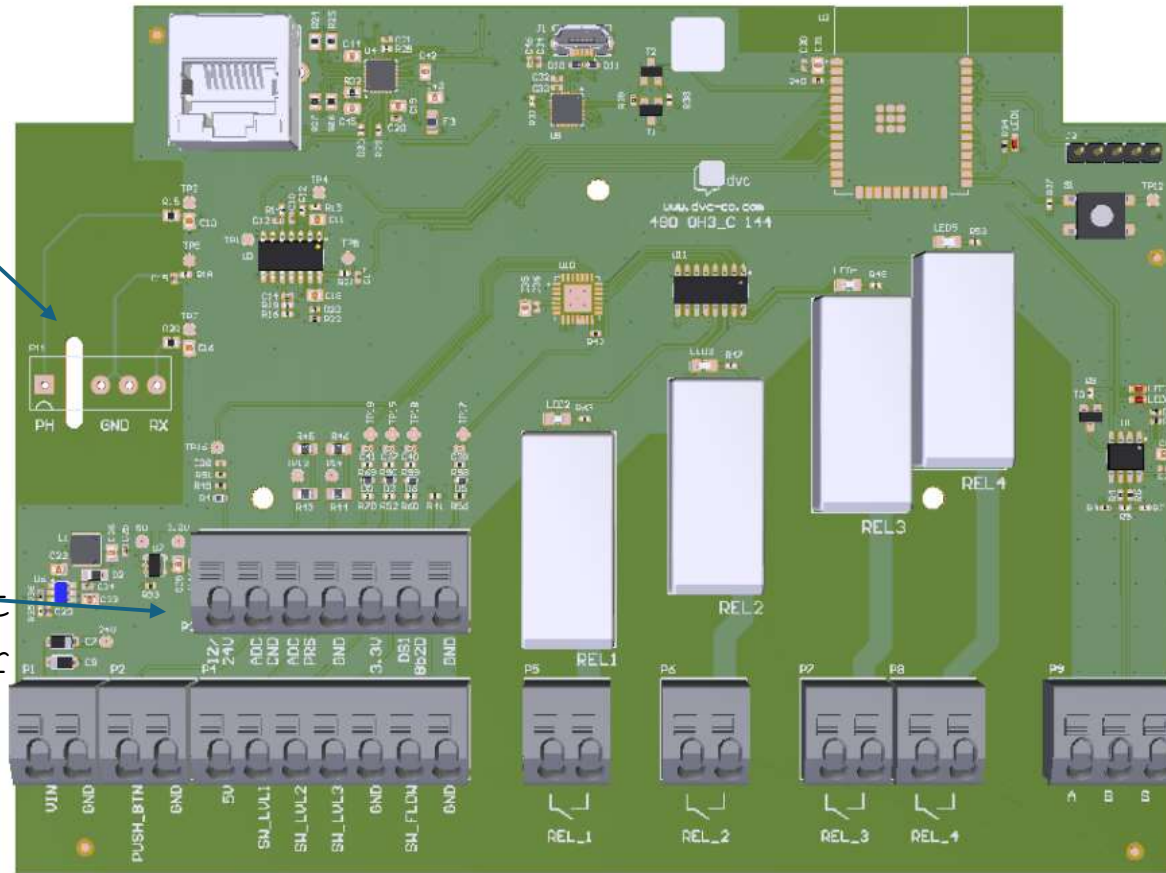


# Wifipool Gen 2 Print

Ethernet-aansluiting Wifimodule

Aansluiting  
pH en RX

Aansluitblok  
Druk  
Conductiviteit  
3x Temperatuur

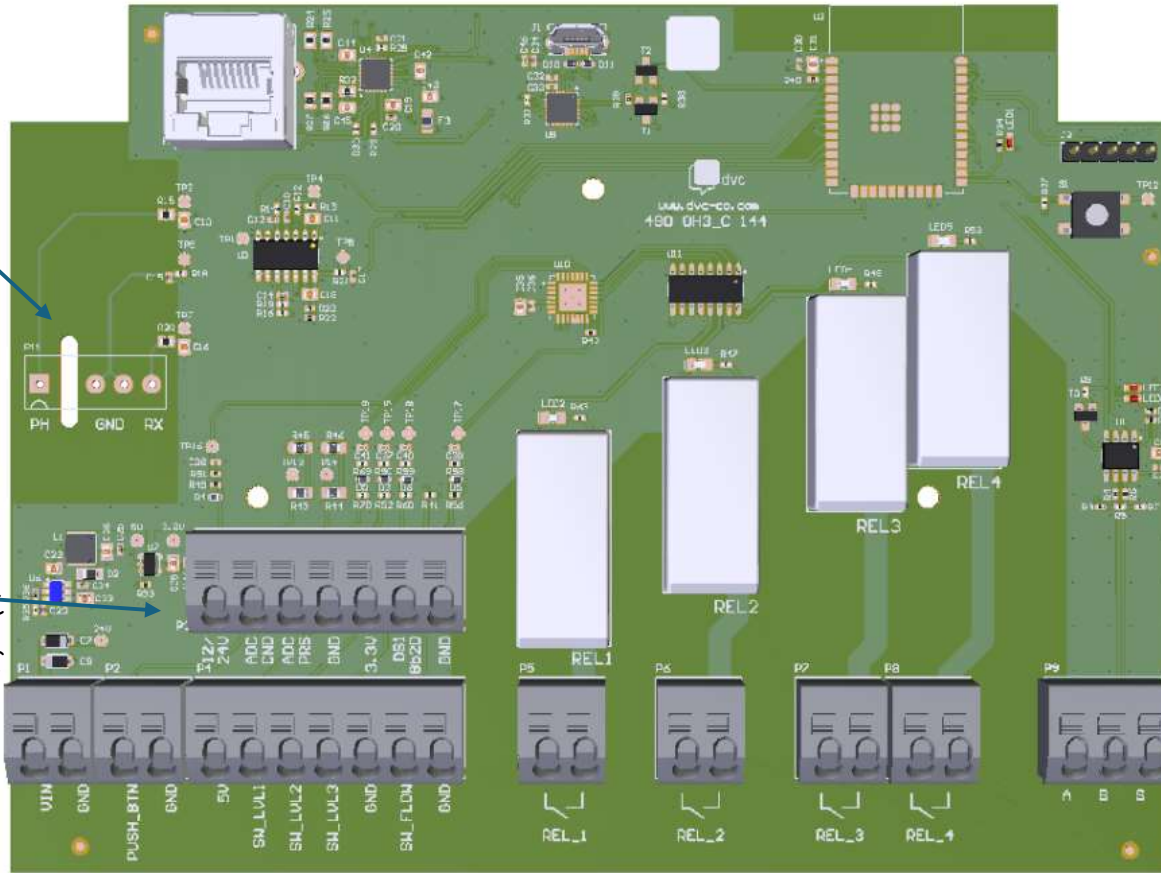


# Wifipool Gen 2 Print

Ethernet-aansluiting Wifimodule

Aansluiting  
pH en RX

Aansluitblok  
Druk  
Conductiviteit  
3x Temperatuur



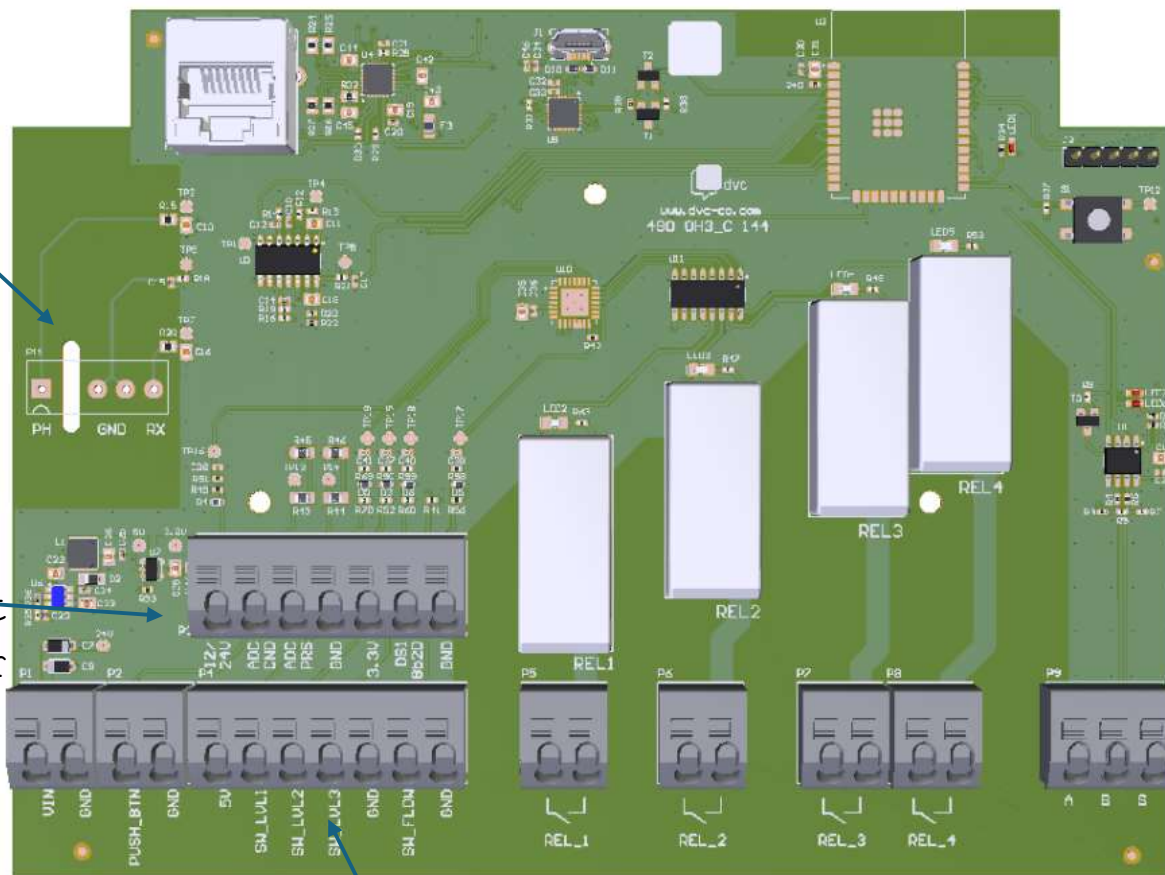
12 of 24V voeding

# Wifipool Gen 2 Print

Ethernet-aansluiting Wifimodule

Aansluiting  
pH en RX

Aansluitblok  
Druk  
Conductiviteit  
3x Temperatuur



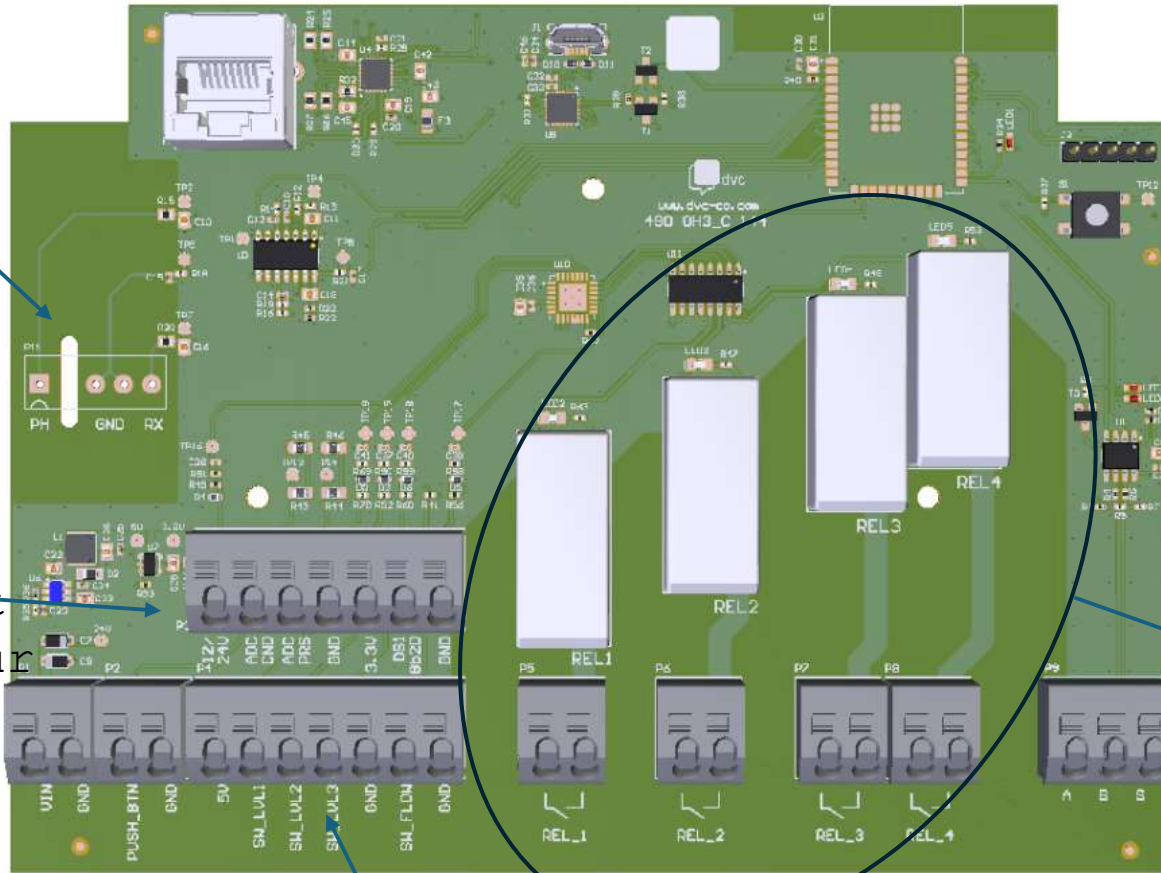
12 of 24V voeding aansluitblok Flow en niveau-meting

# Wifipool Gen 2 Print

Ethernet-aansluiting Wifimodule

Aansluiting  
pH en RX

Aansluitblok  
Druk  
Conductiviteit  
3 x Temperatuur

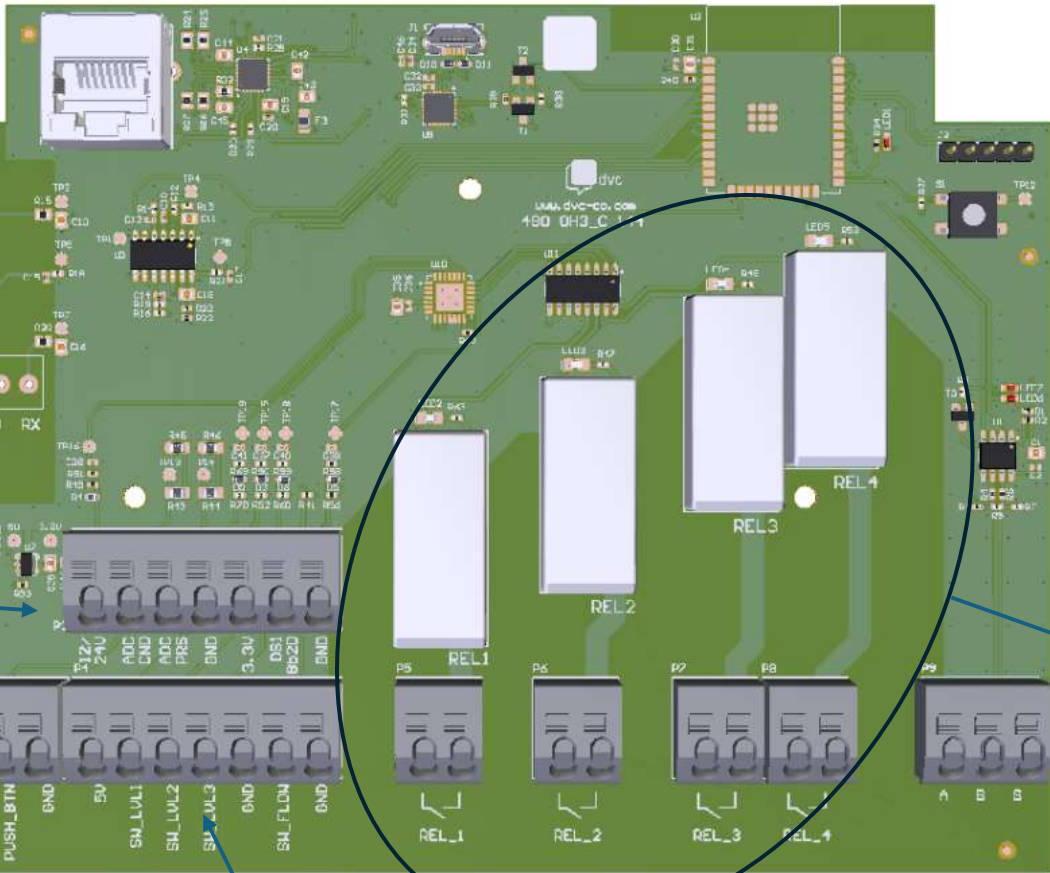


4 Relais

12 of 24V voeding Aansluitblok Flow en niveau-meting

# Wifipool Gen 2 Print

Ethernet-aansluiting Wifimodule



Aansluiting pH en RX

Aansluitblok Druk Conductiviteit 3 x Temperatuur

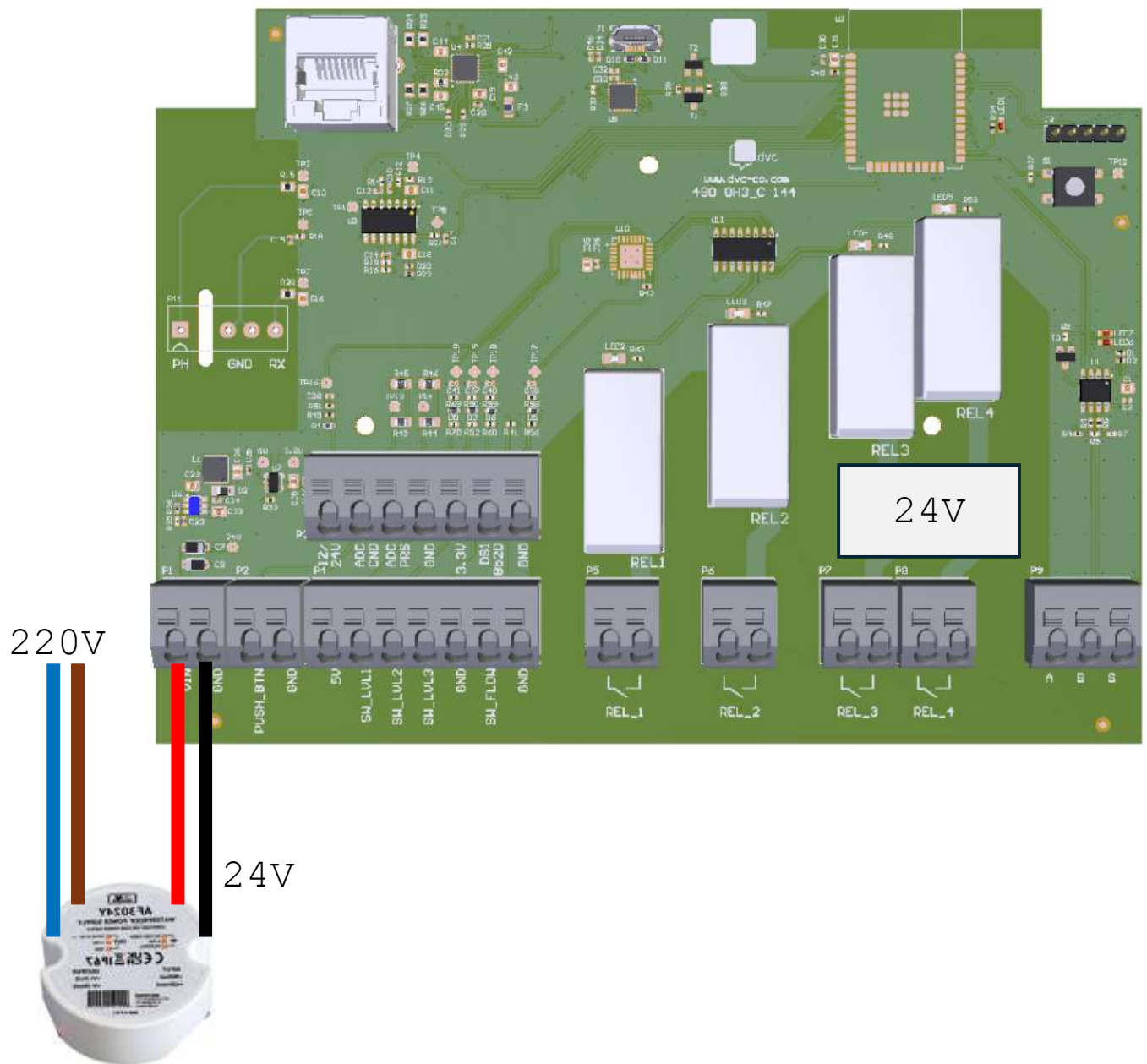
RS485 interface

4 Relais

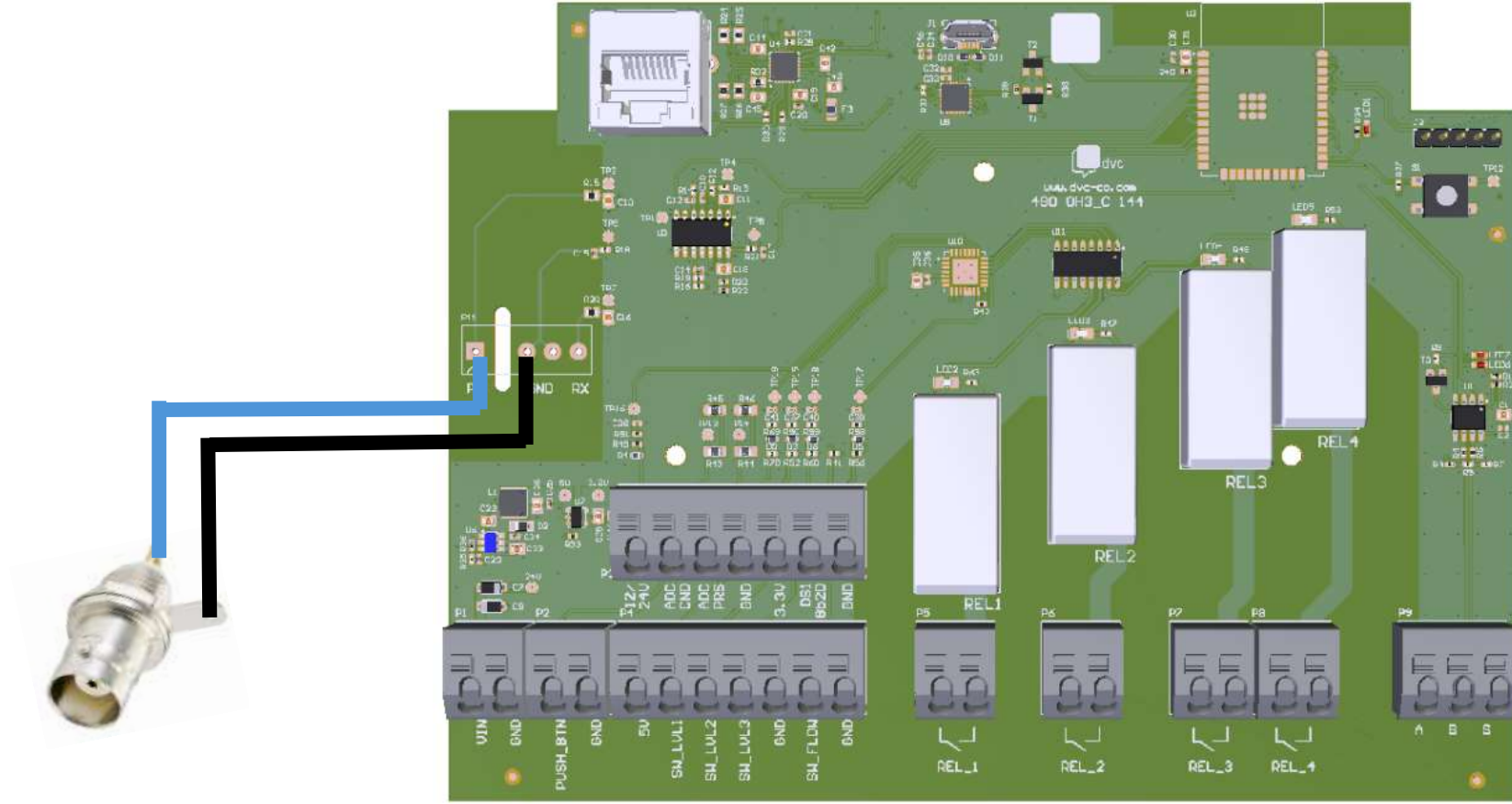
12 of 24V voeding aansluitblok Flow en niveau-meting



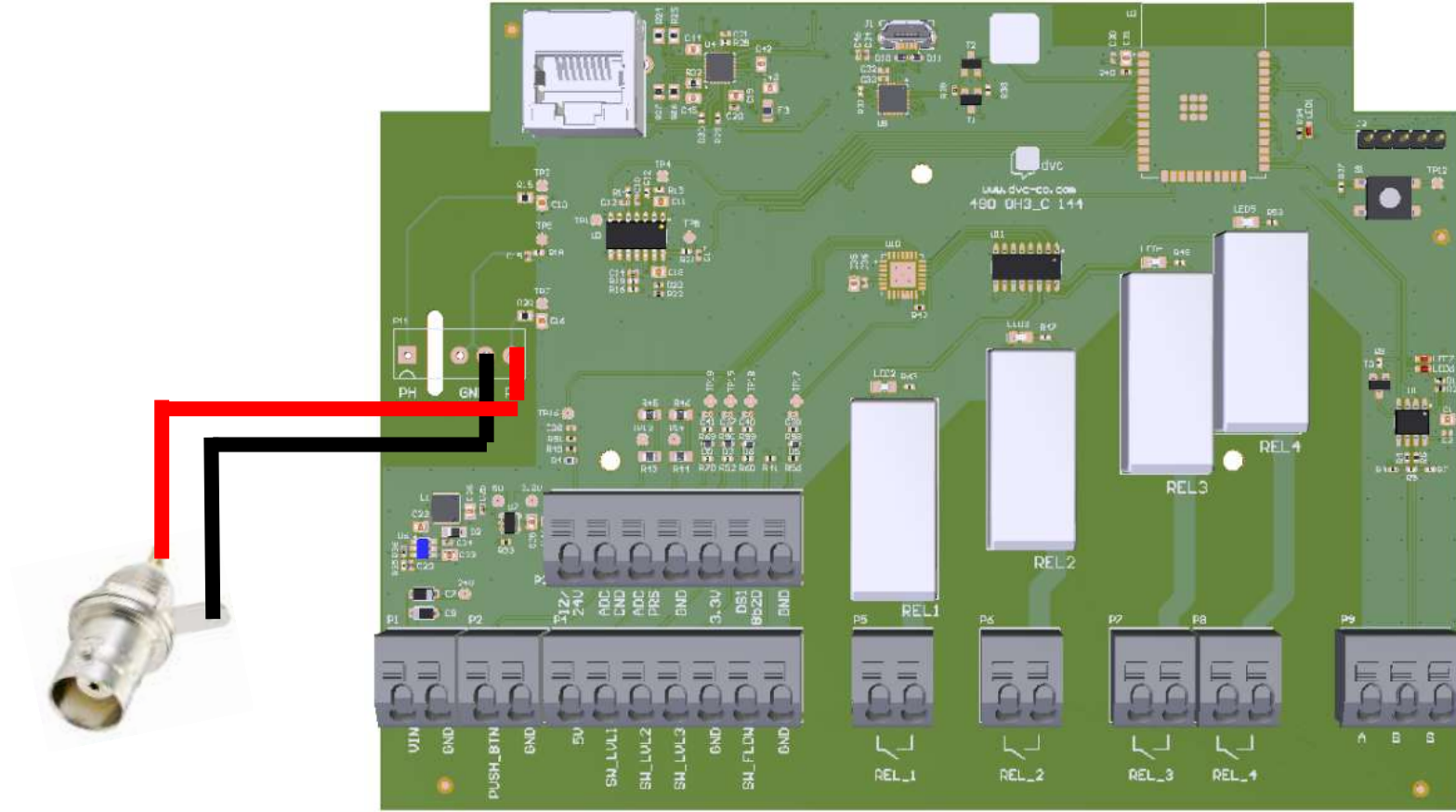
# Voeding 24V



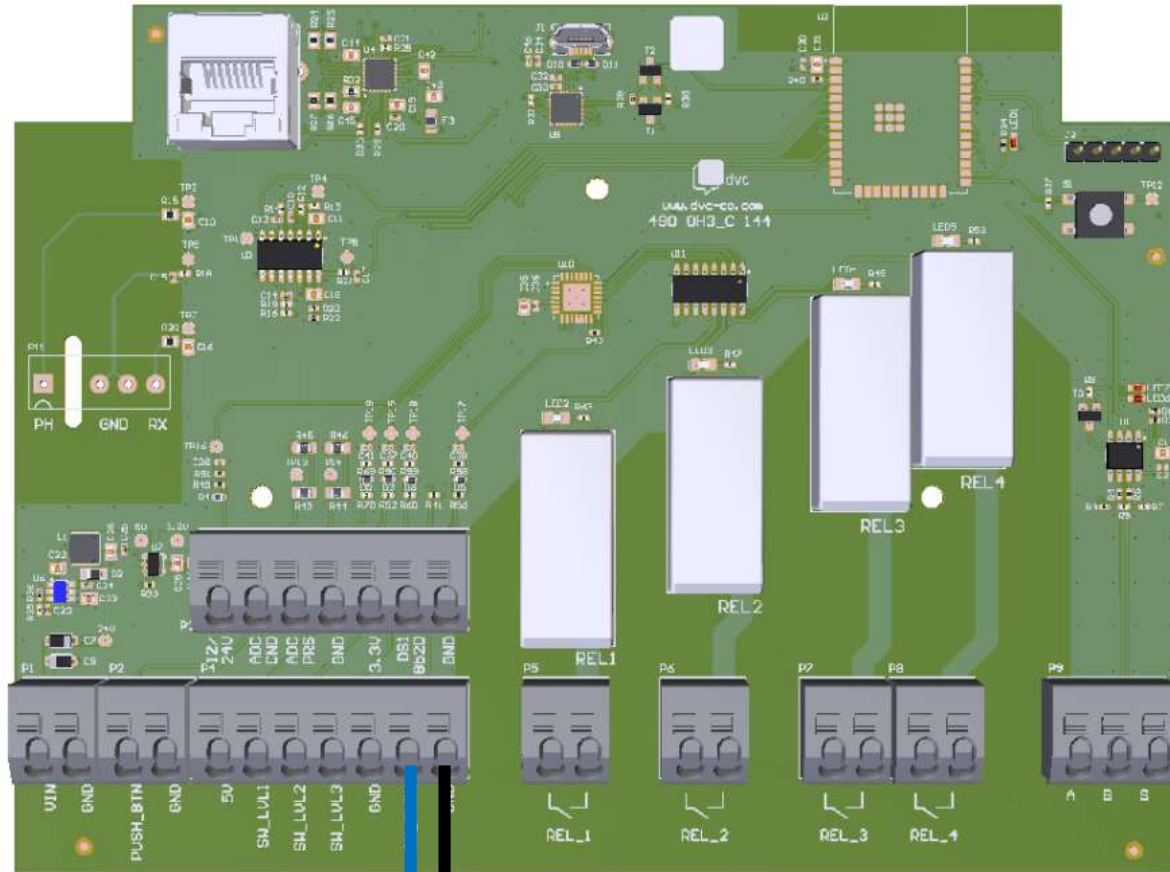
pH



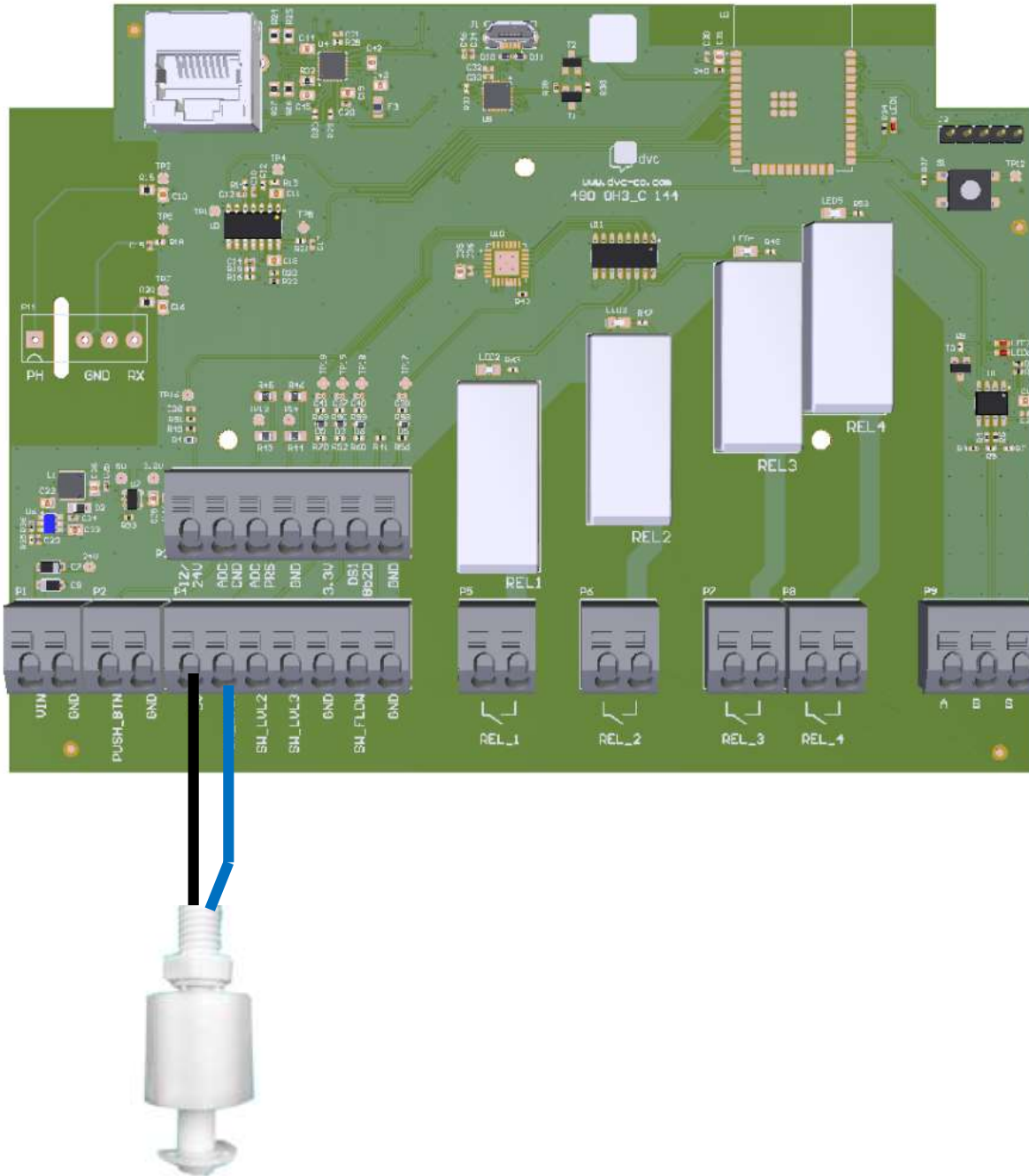
RX



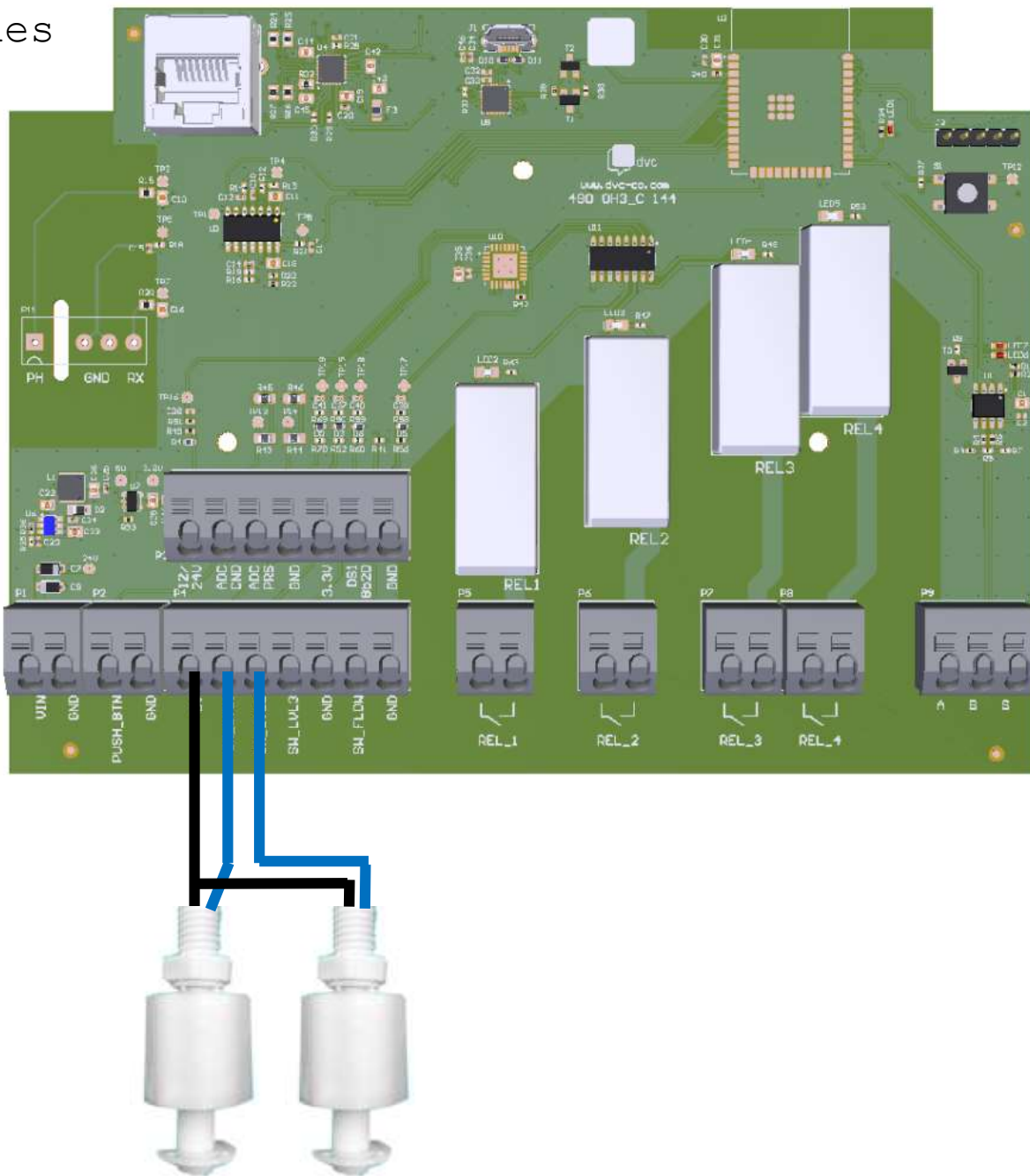
Flow switch



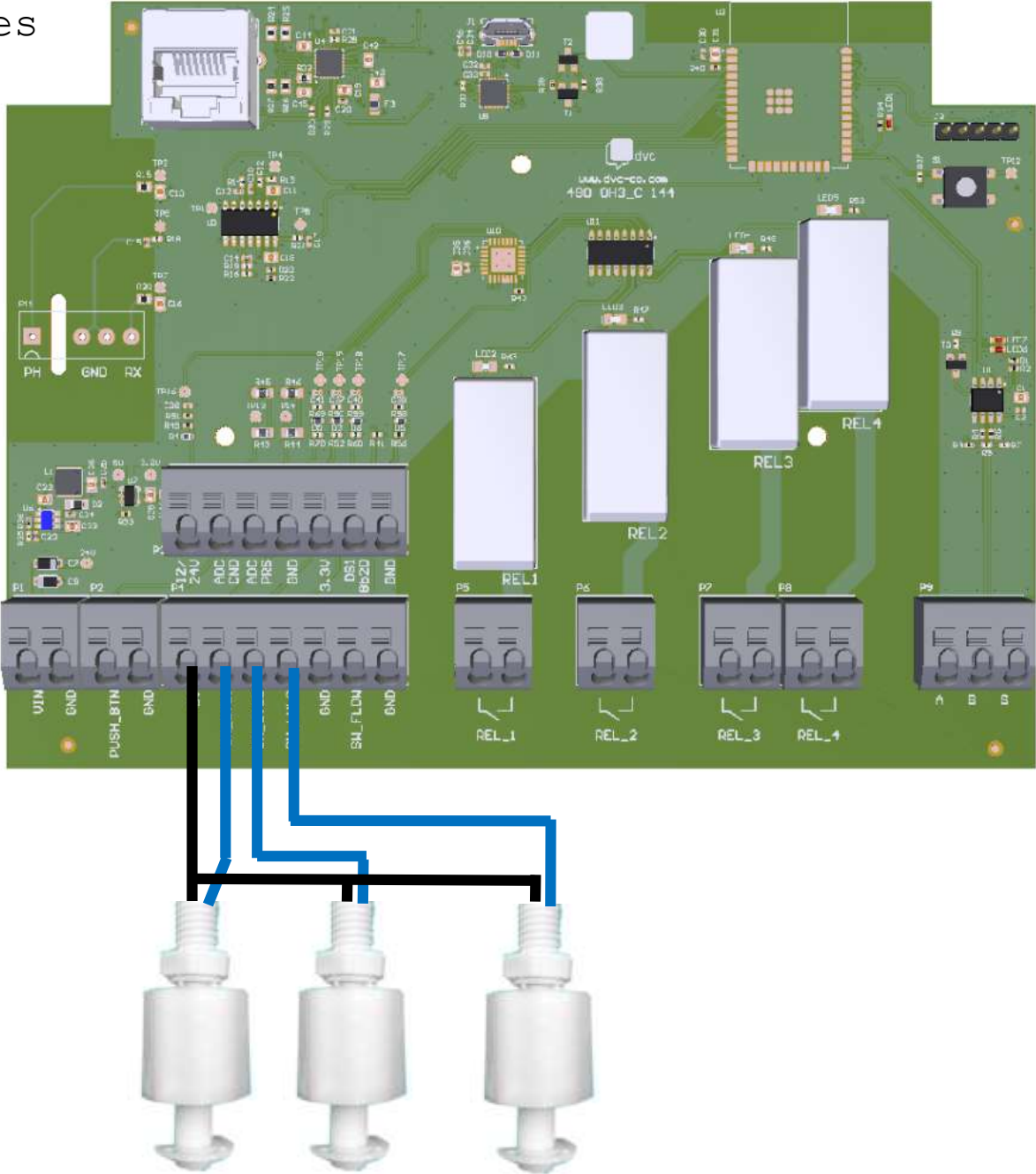
1 Level switch



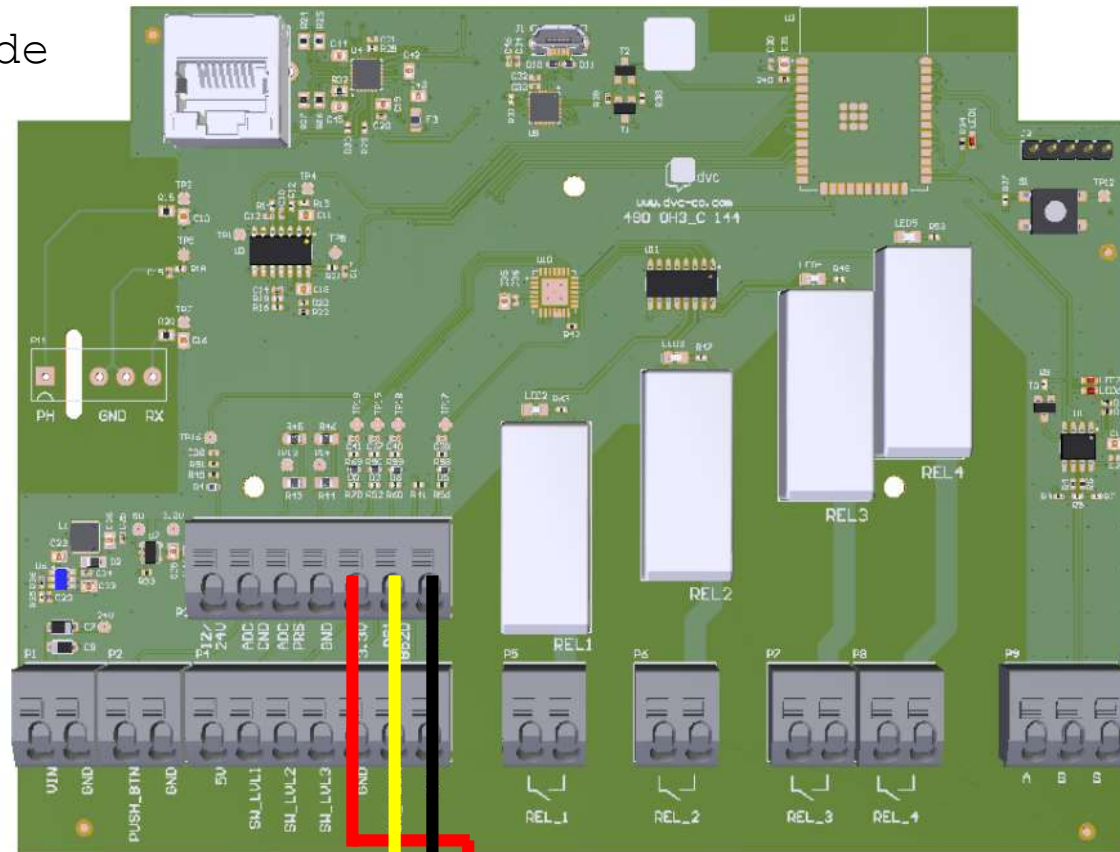
2 Level switches



3 Level switches

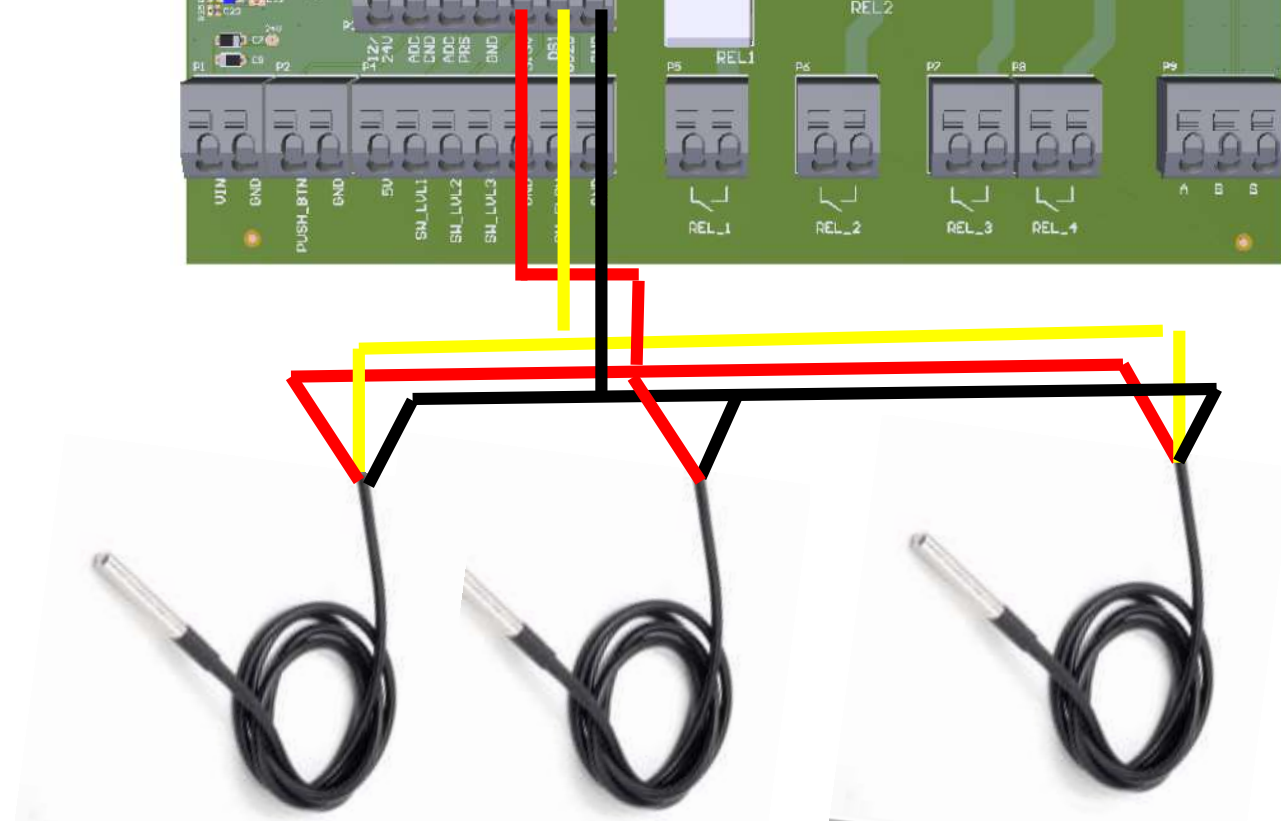
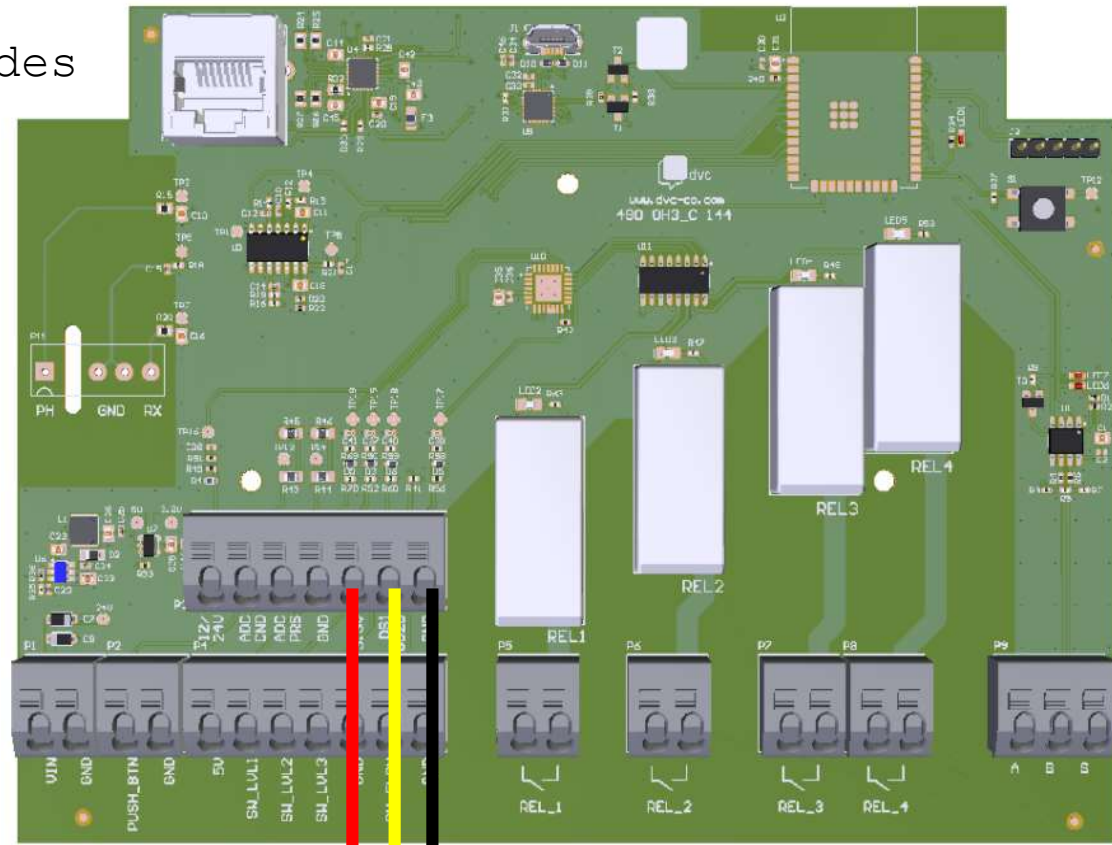


# 1 Temp Sonde

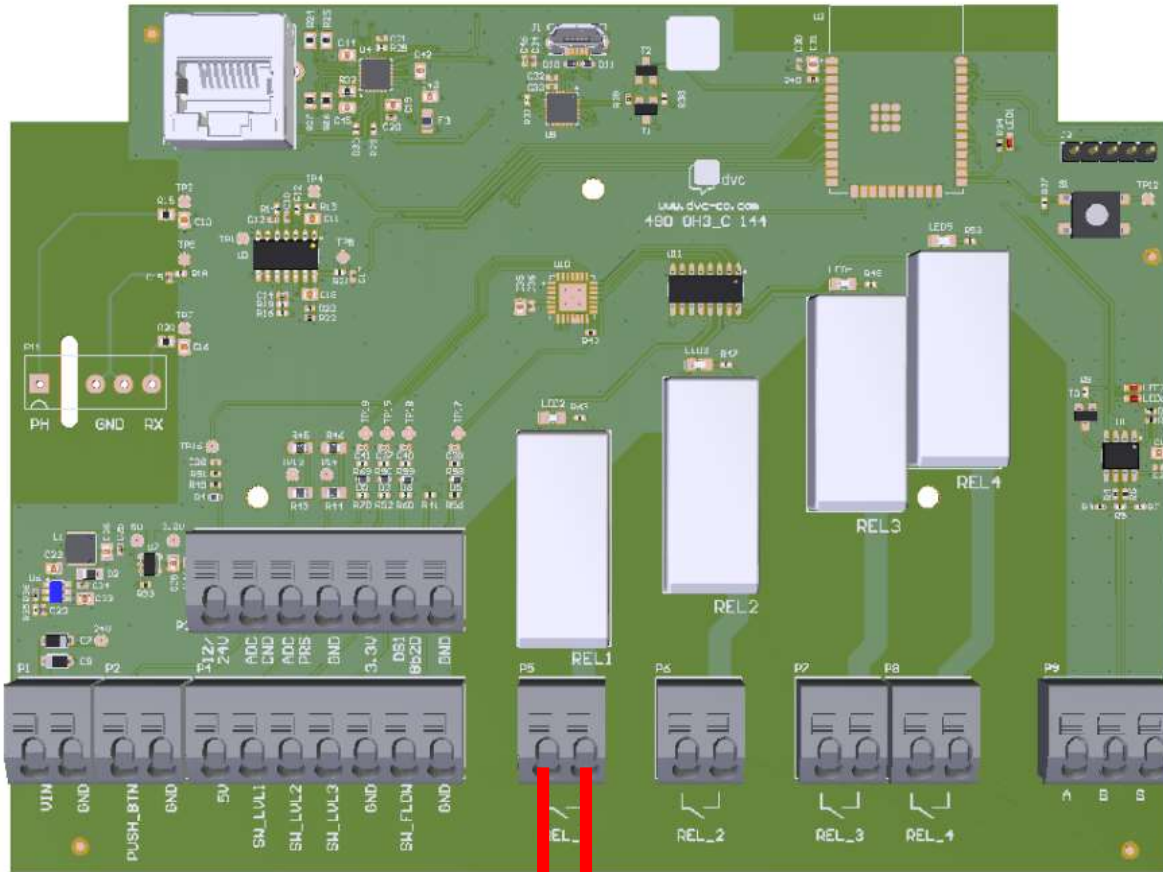




### 3 Temp Sondes



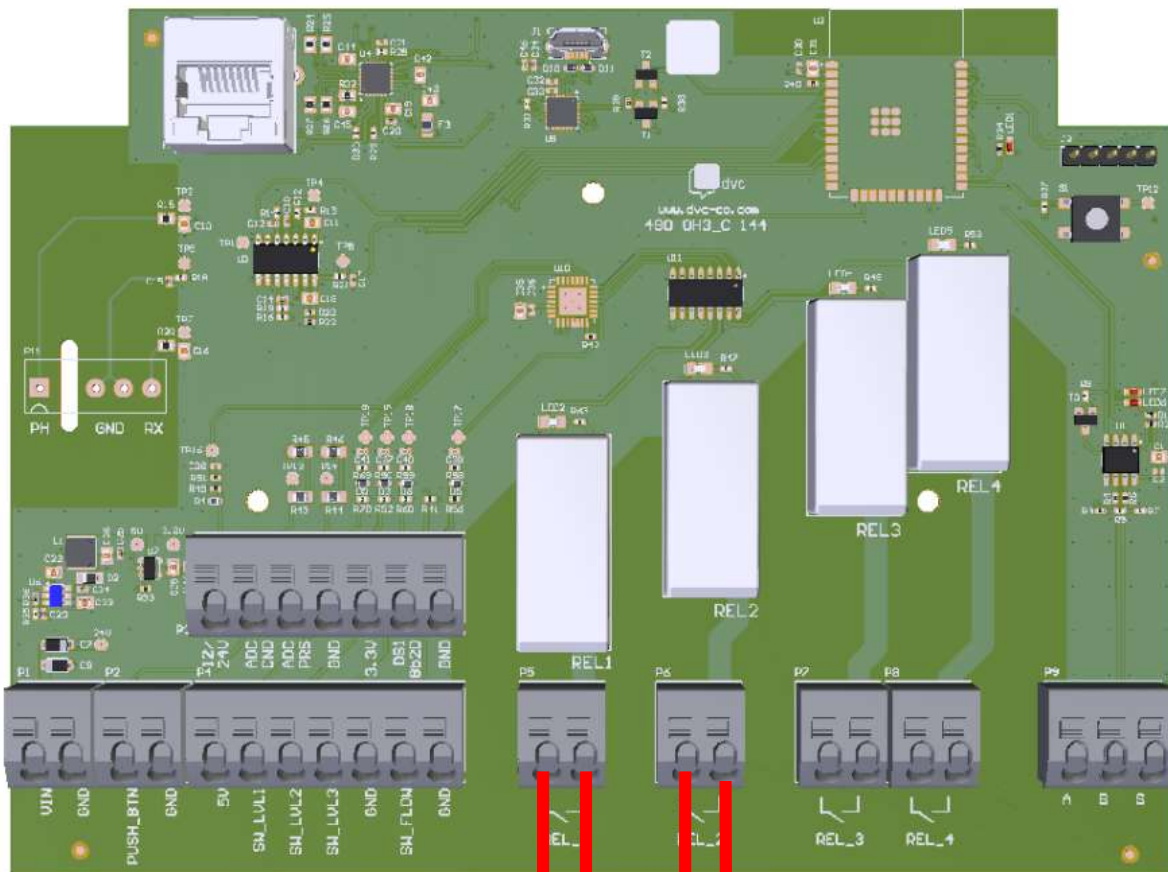
1 peristalt pump



220V

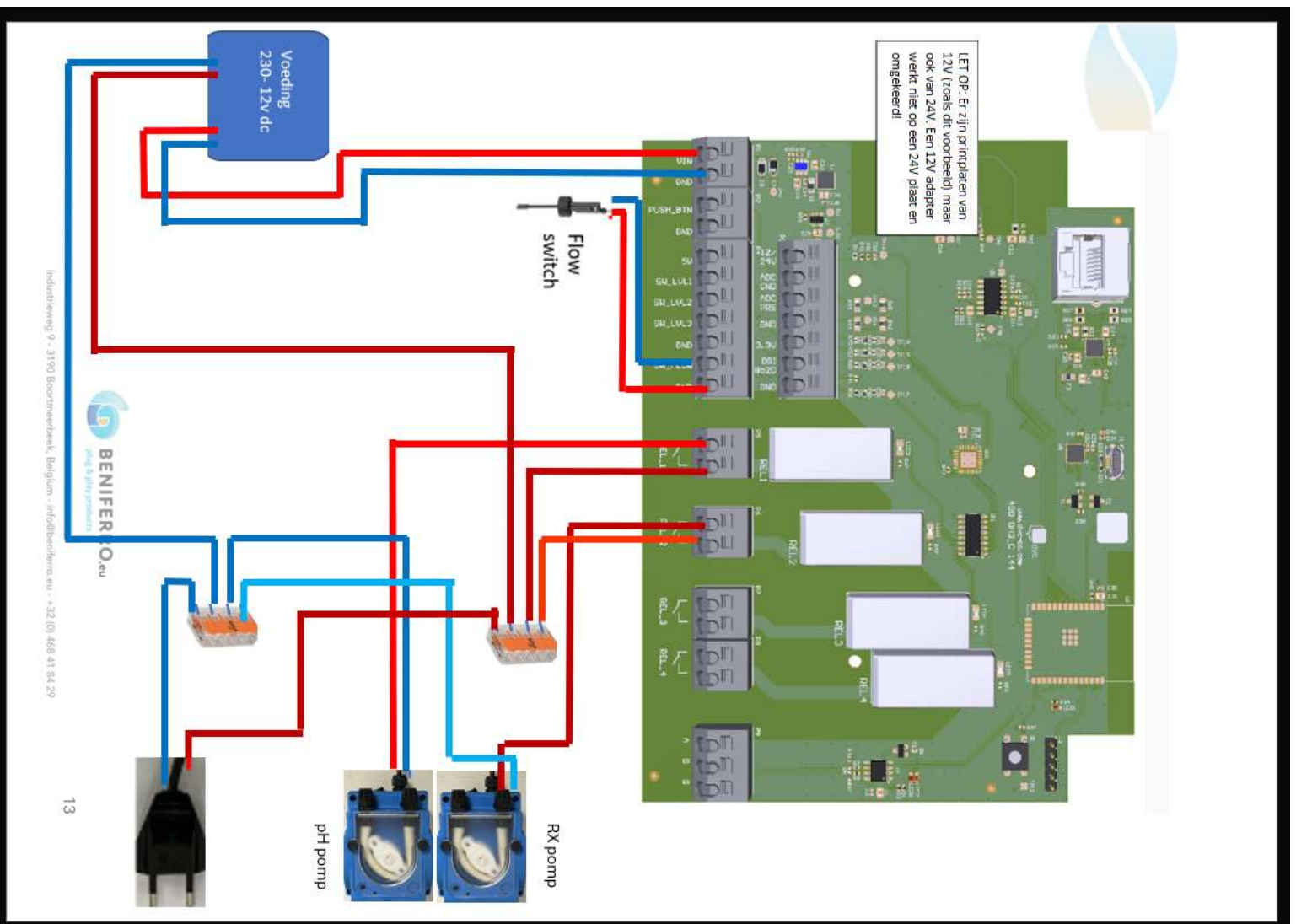


2 peristalt  
pompen

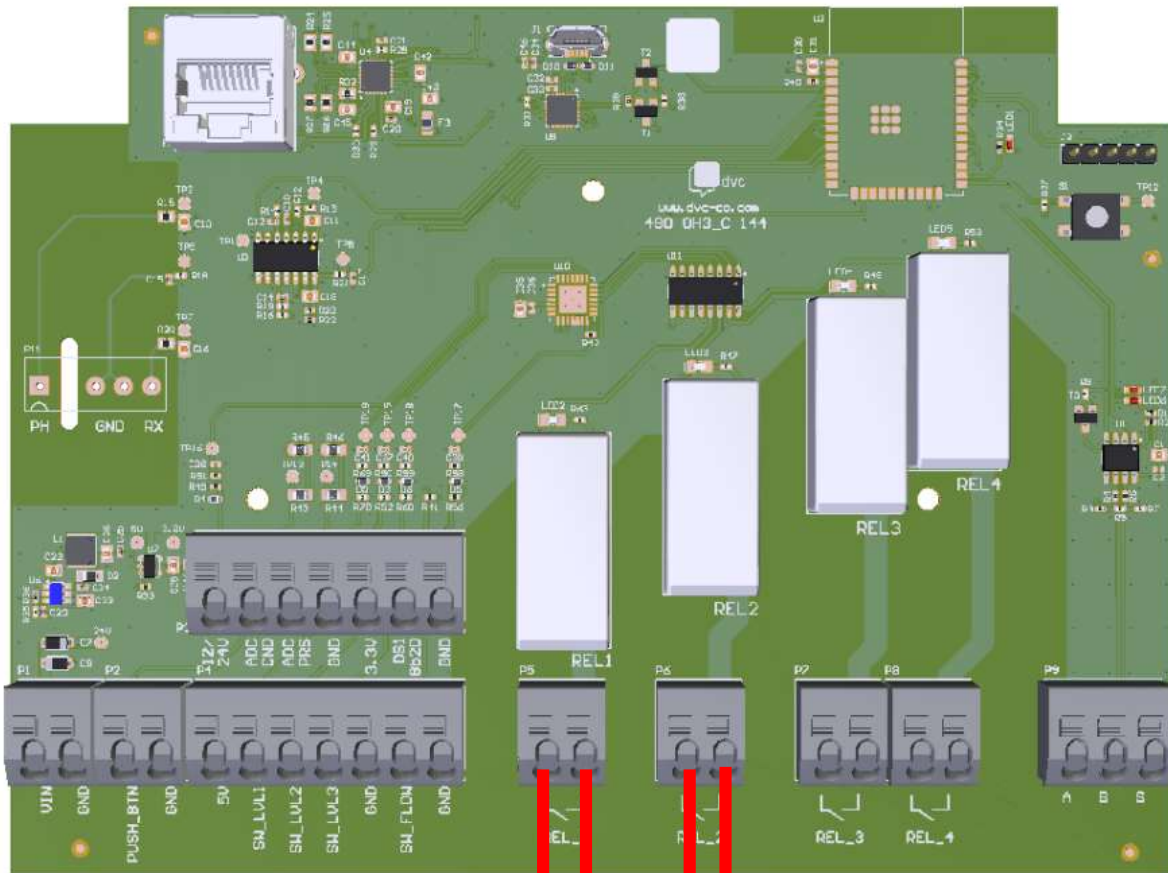


220V

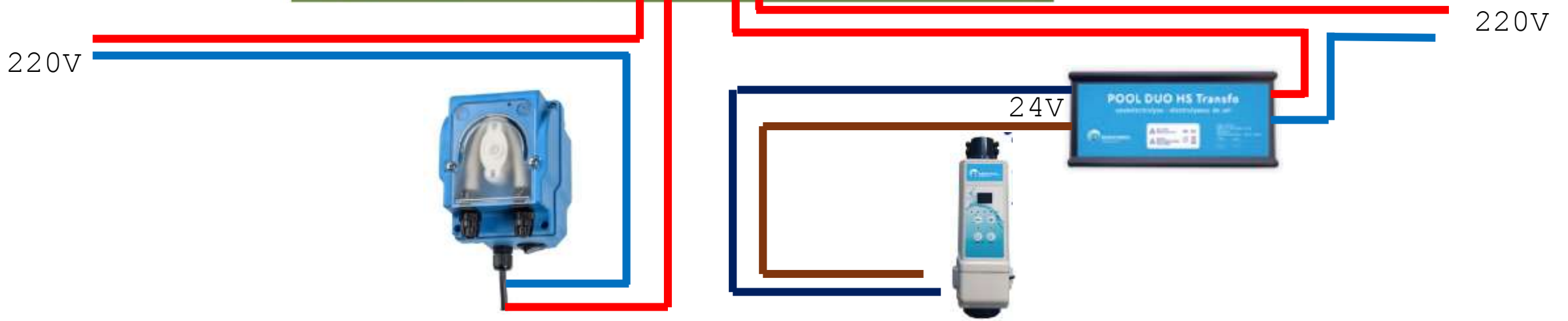








1 peristaltish  
pomp en  
1 Zoutelektrol



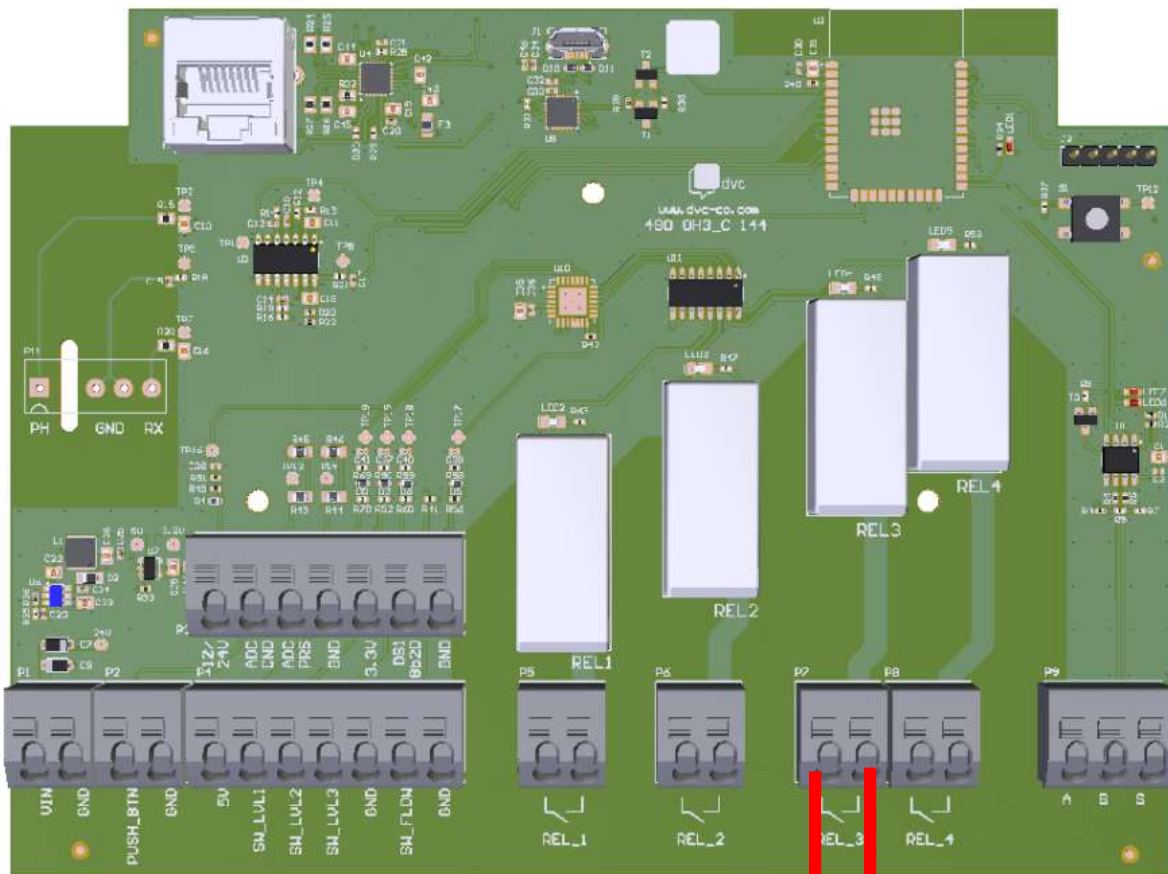
220V

220V

24V



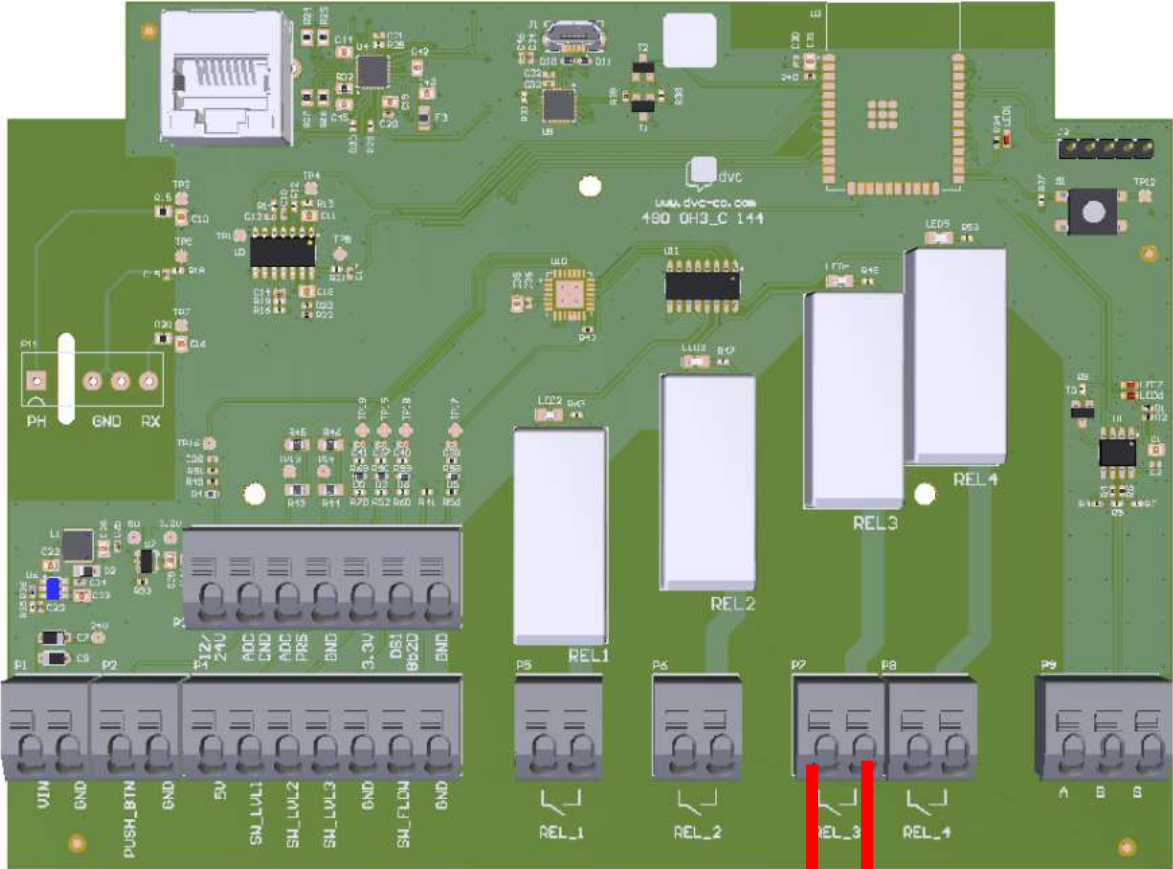
1 warmpom



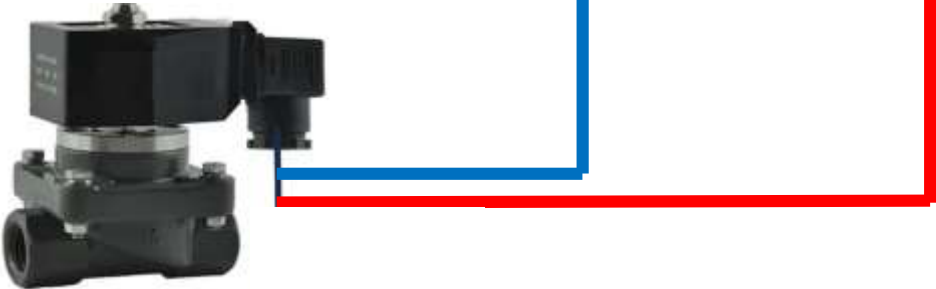
220V



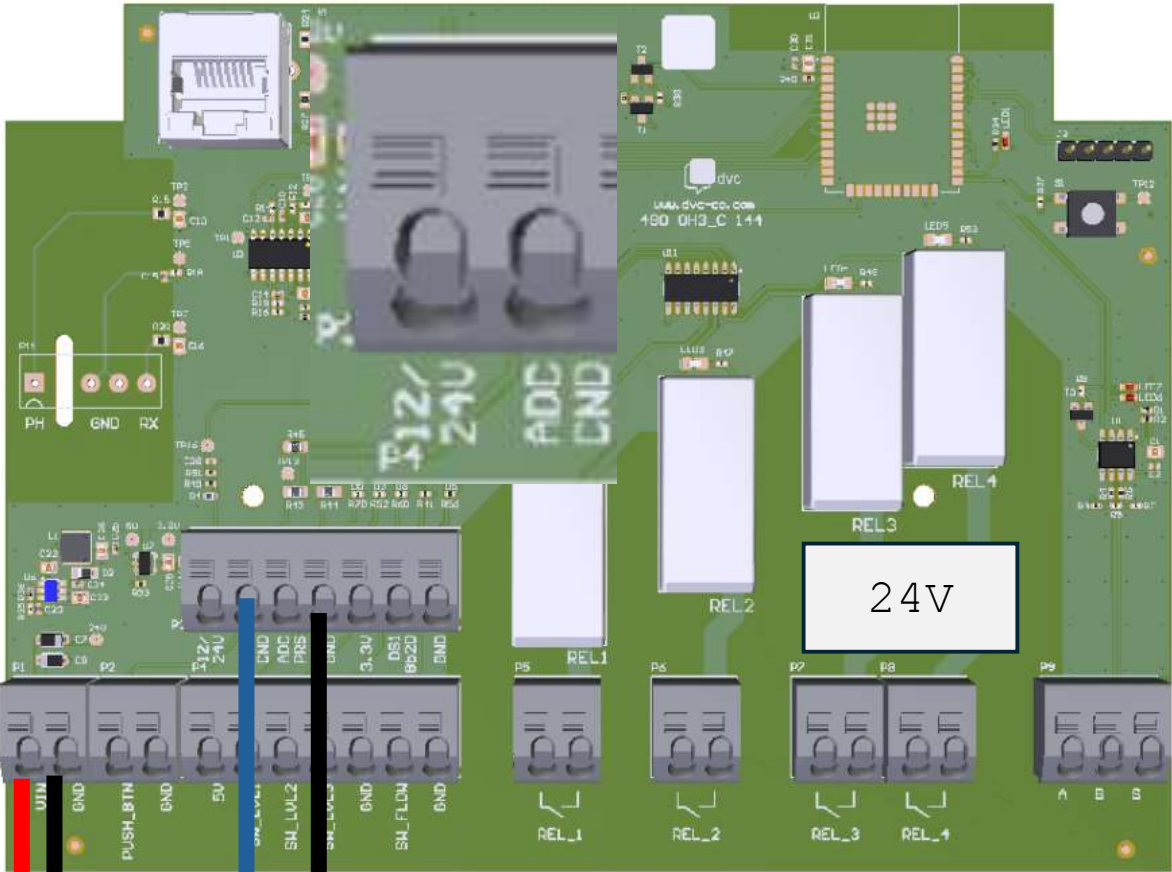
Solenoide kra



220V



# Conductivity

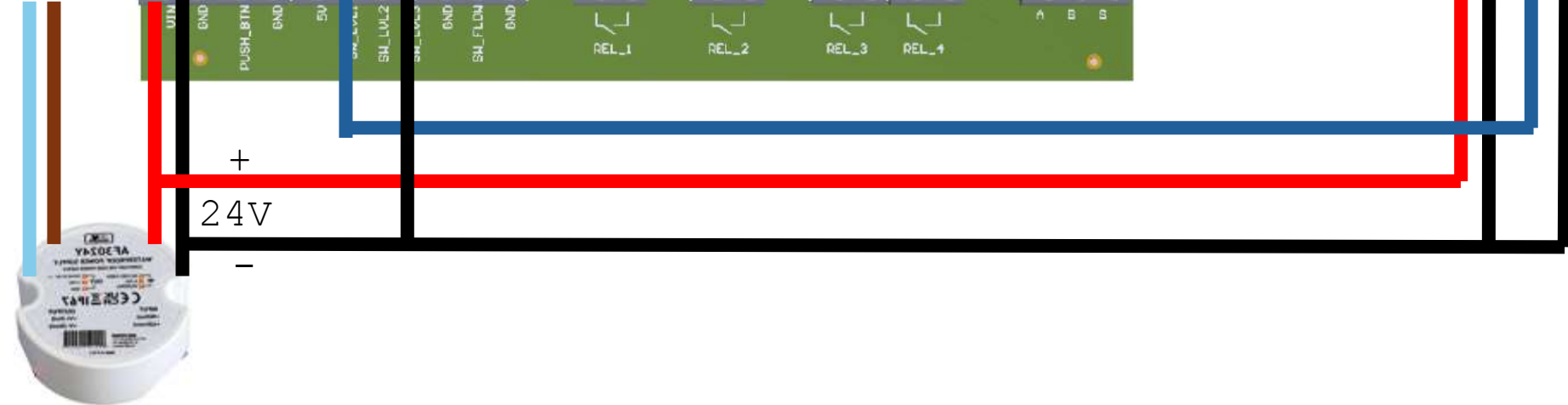


0-20mS k1 setting  
K1 sonde gebruiken

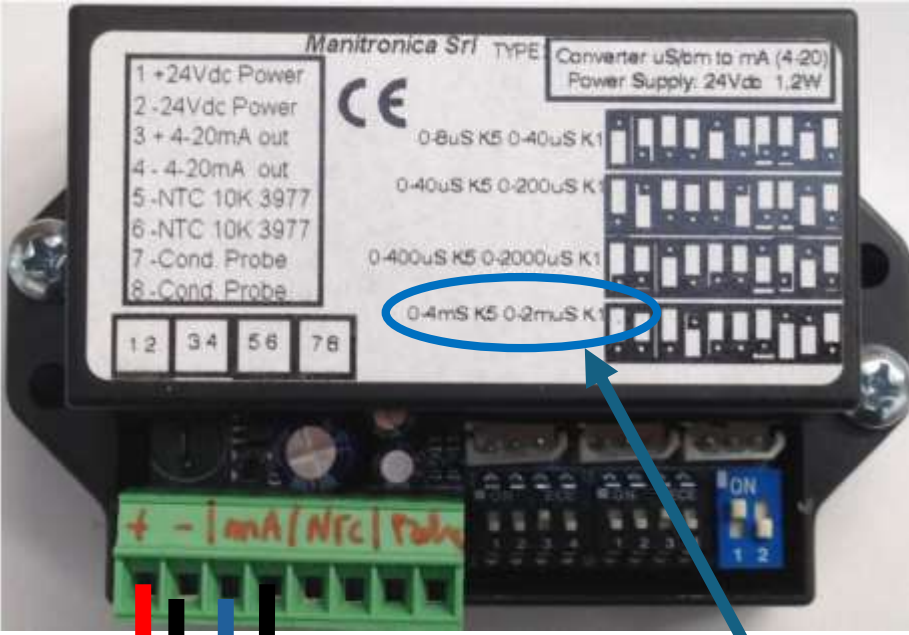
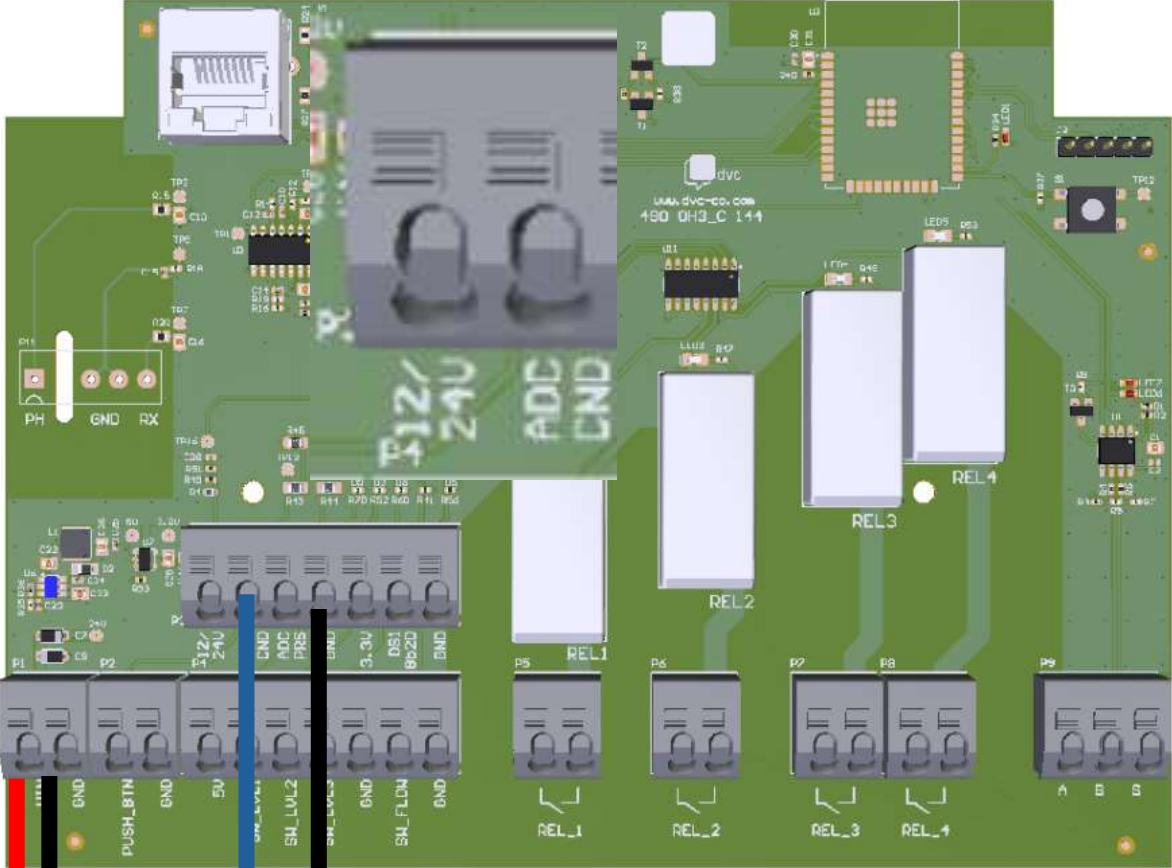


220V

24V



# Conductivity



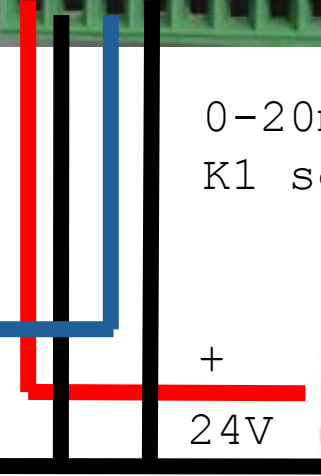
0-20mS k1 setting en K1 sonde gebruiken

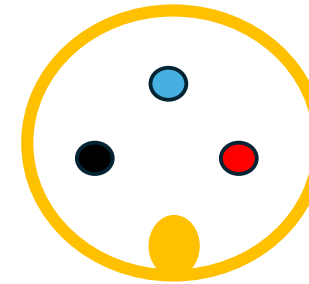
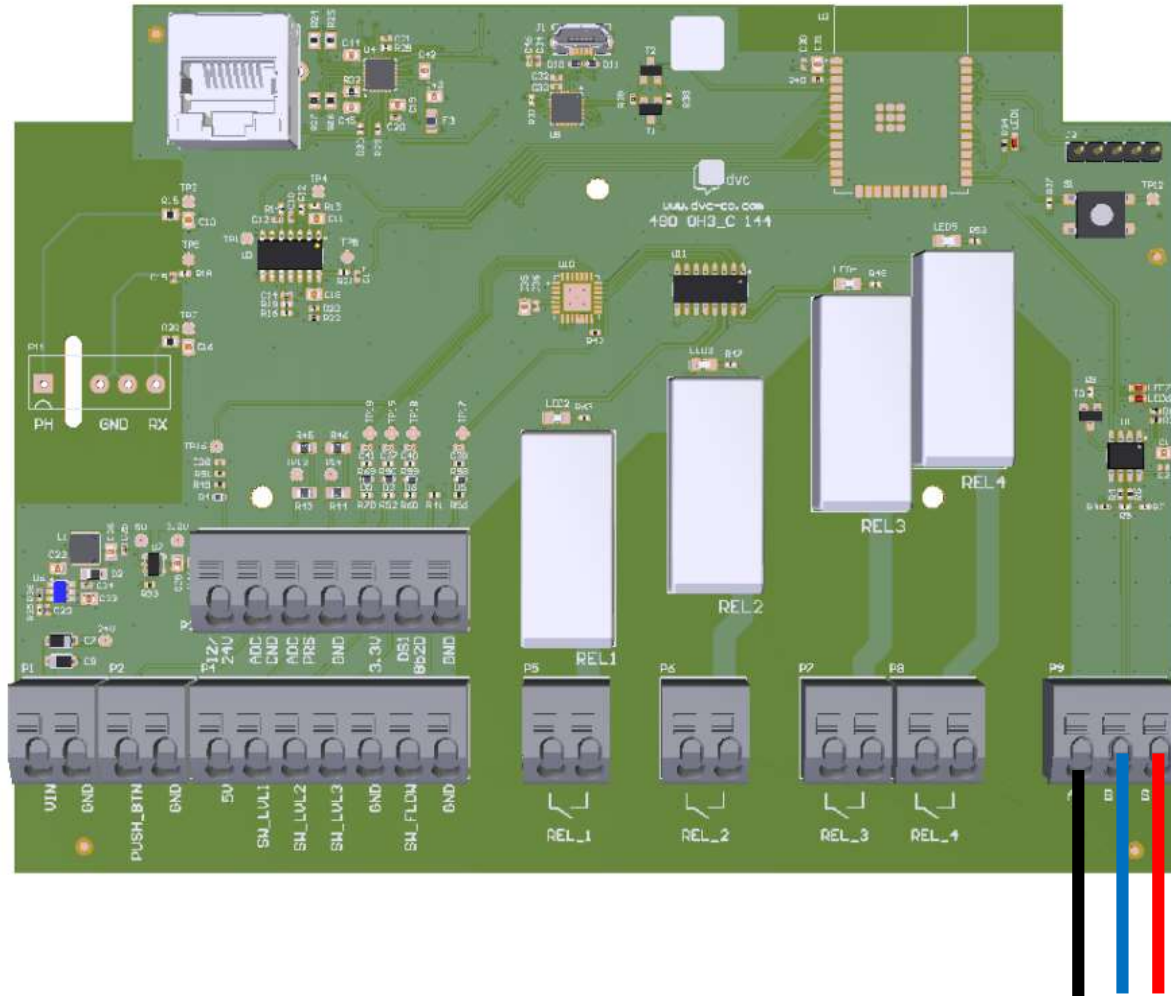


+  
24V  
-

220V

220V

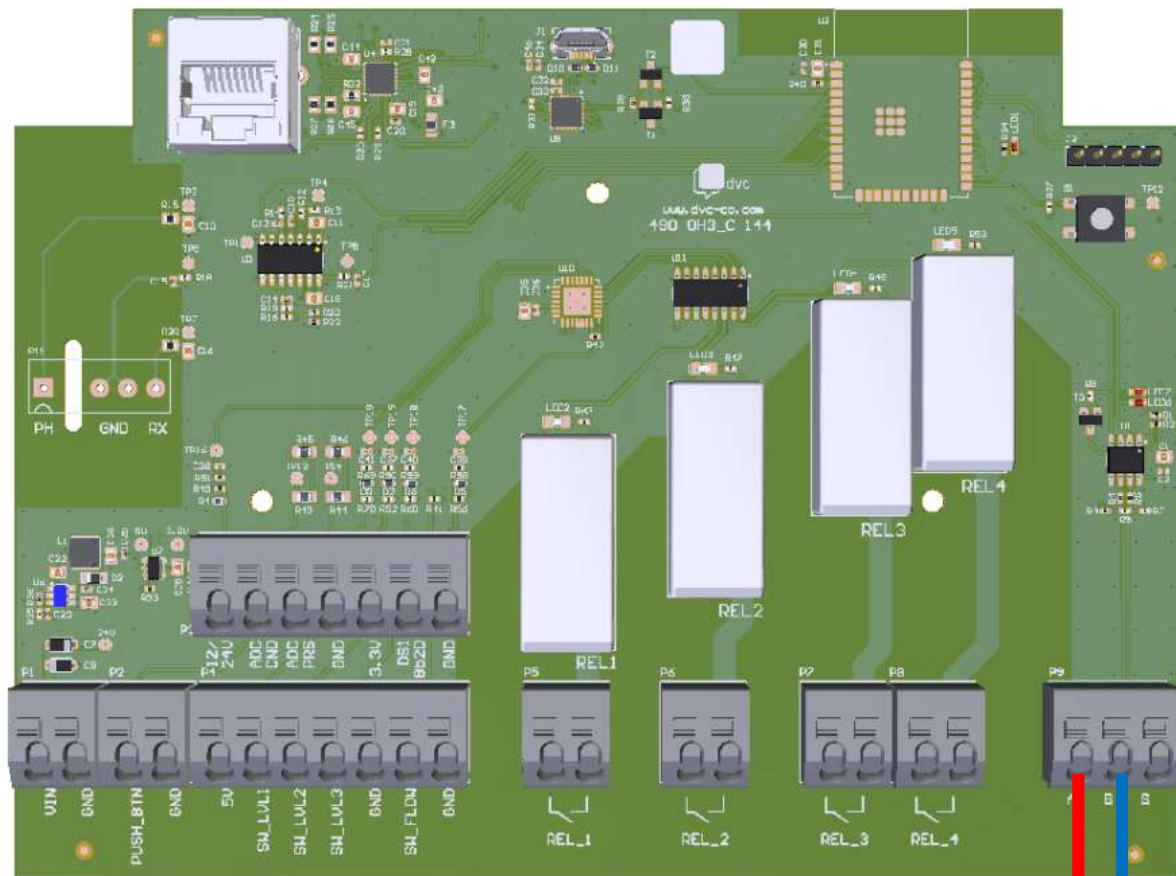




A = Zwart  
B = Blauw (of Geel)  
C = Geel



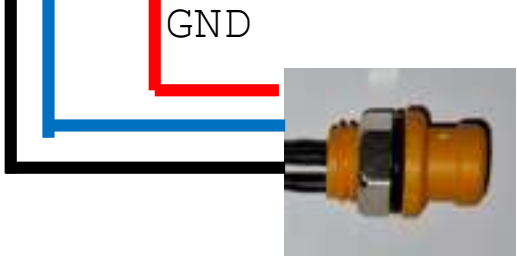
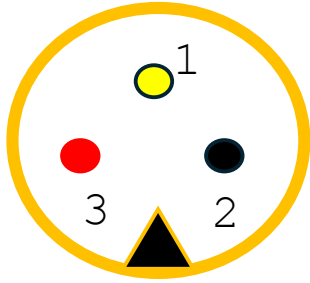
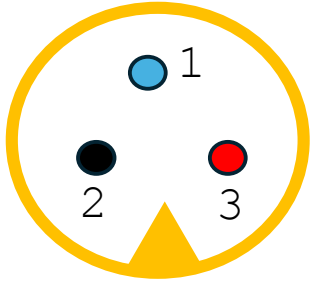
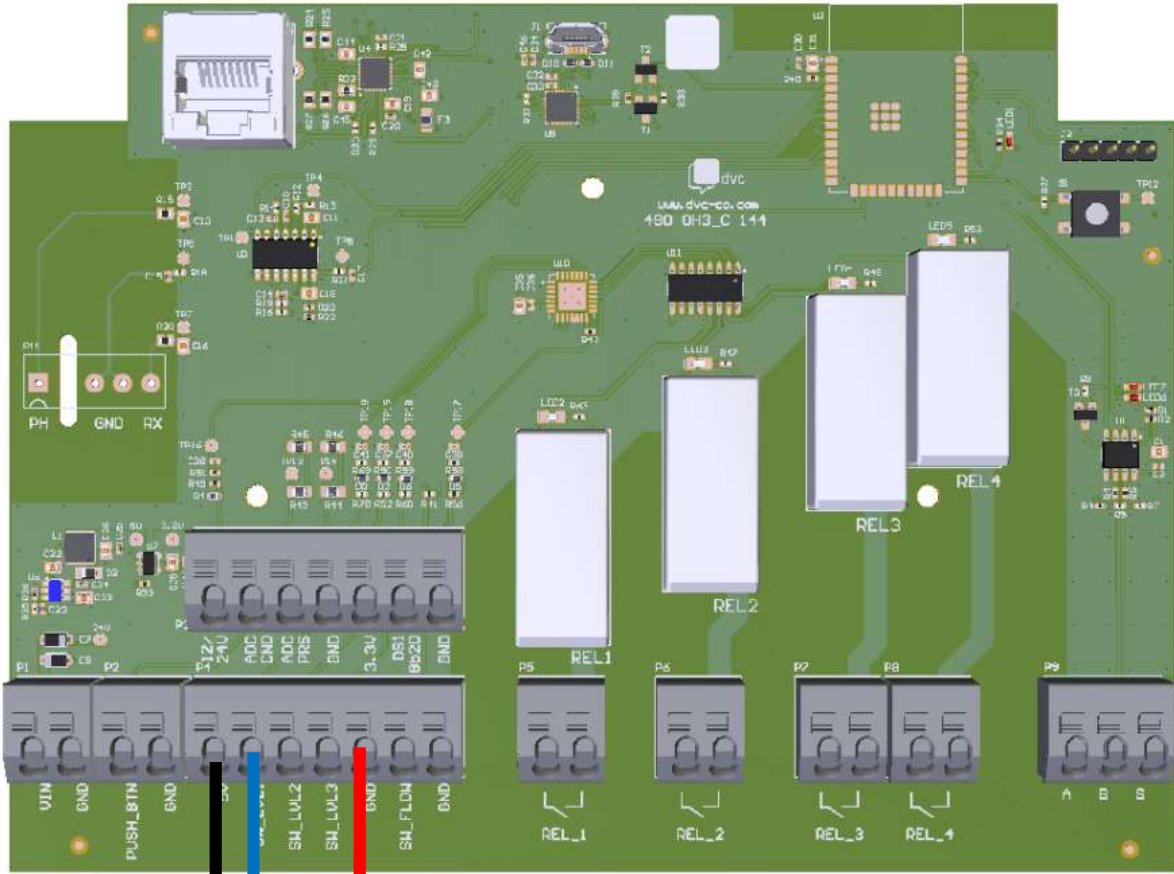
# Frequency regulator - Direct connection

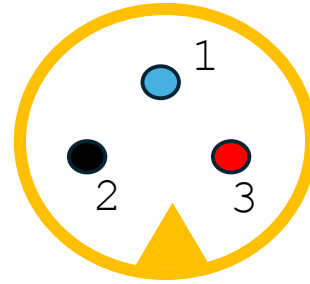
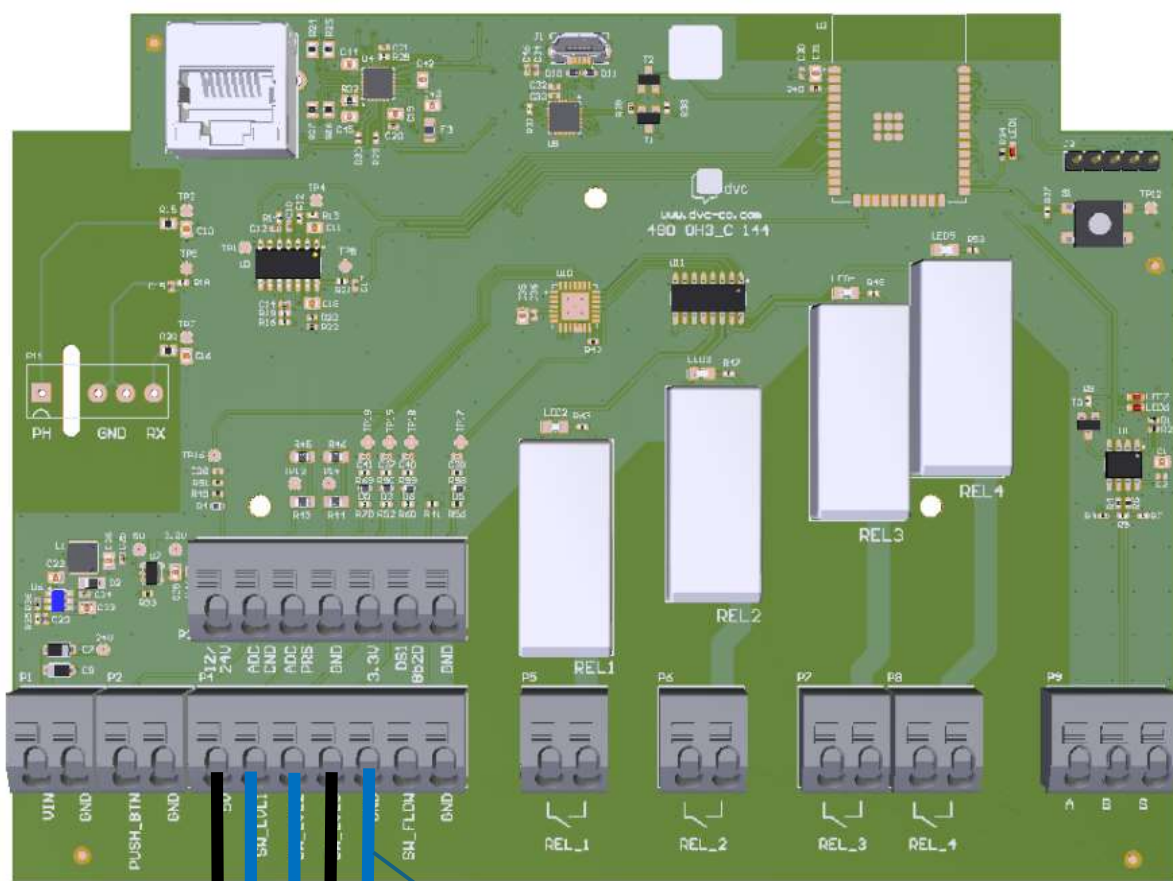


A = + = rode  
draad  
B = - = blauwe  
draad

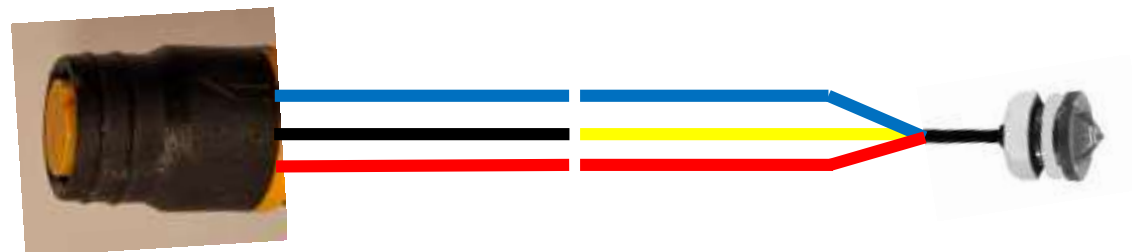
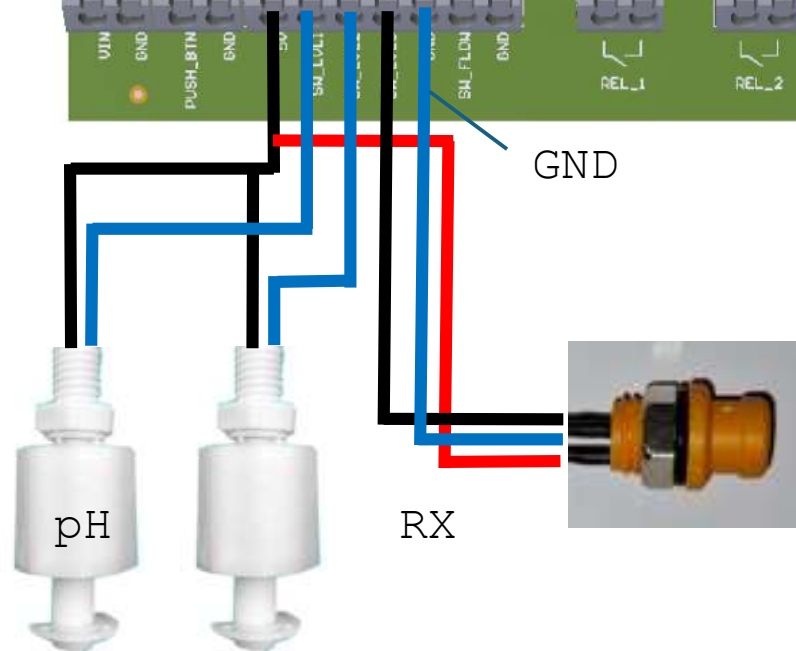
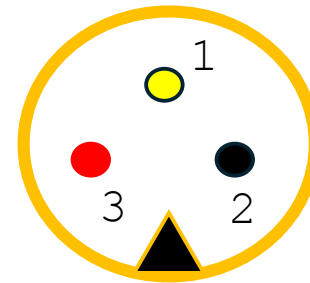


# pH + RX + Spa level switch

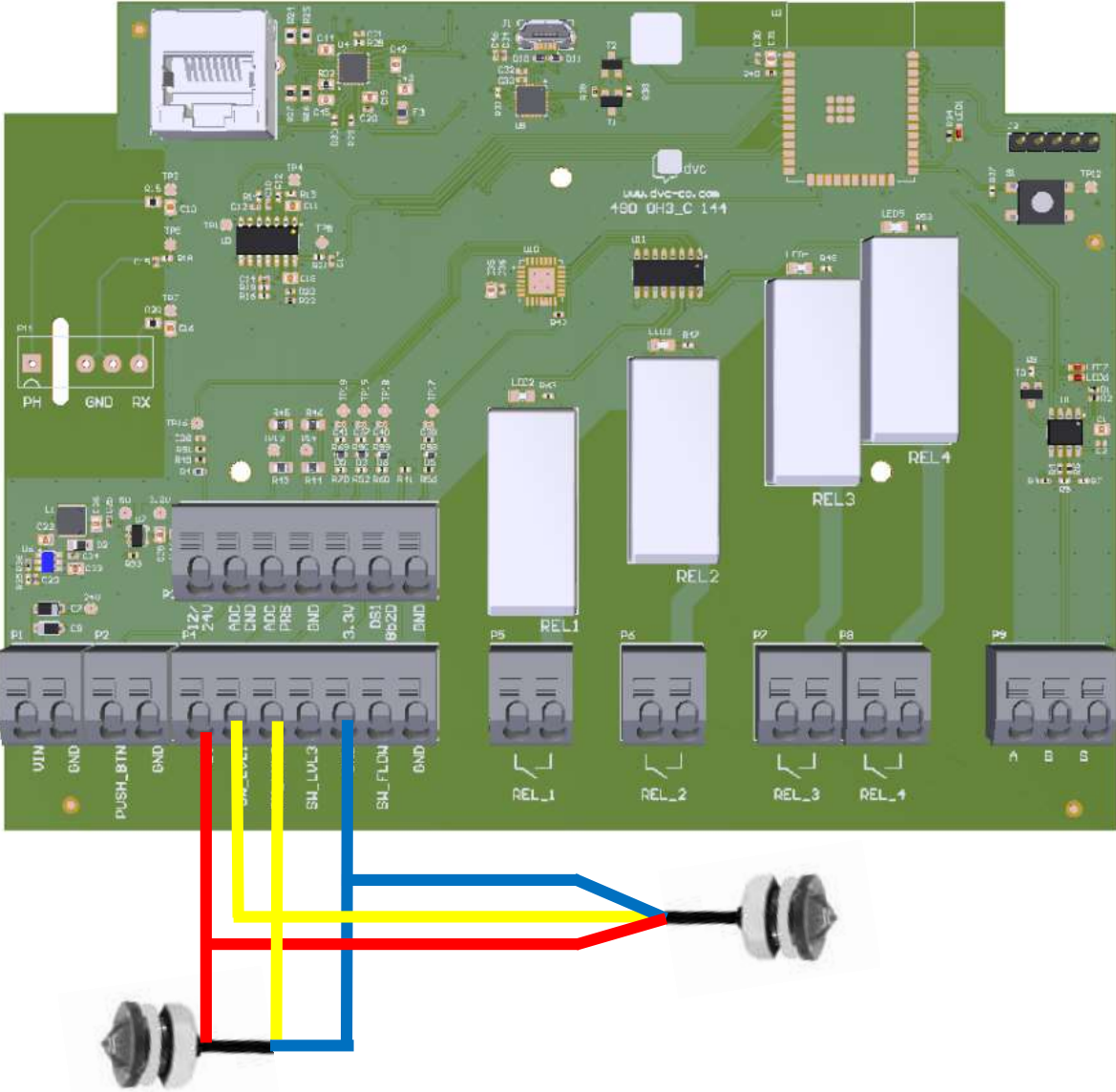




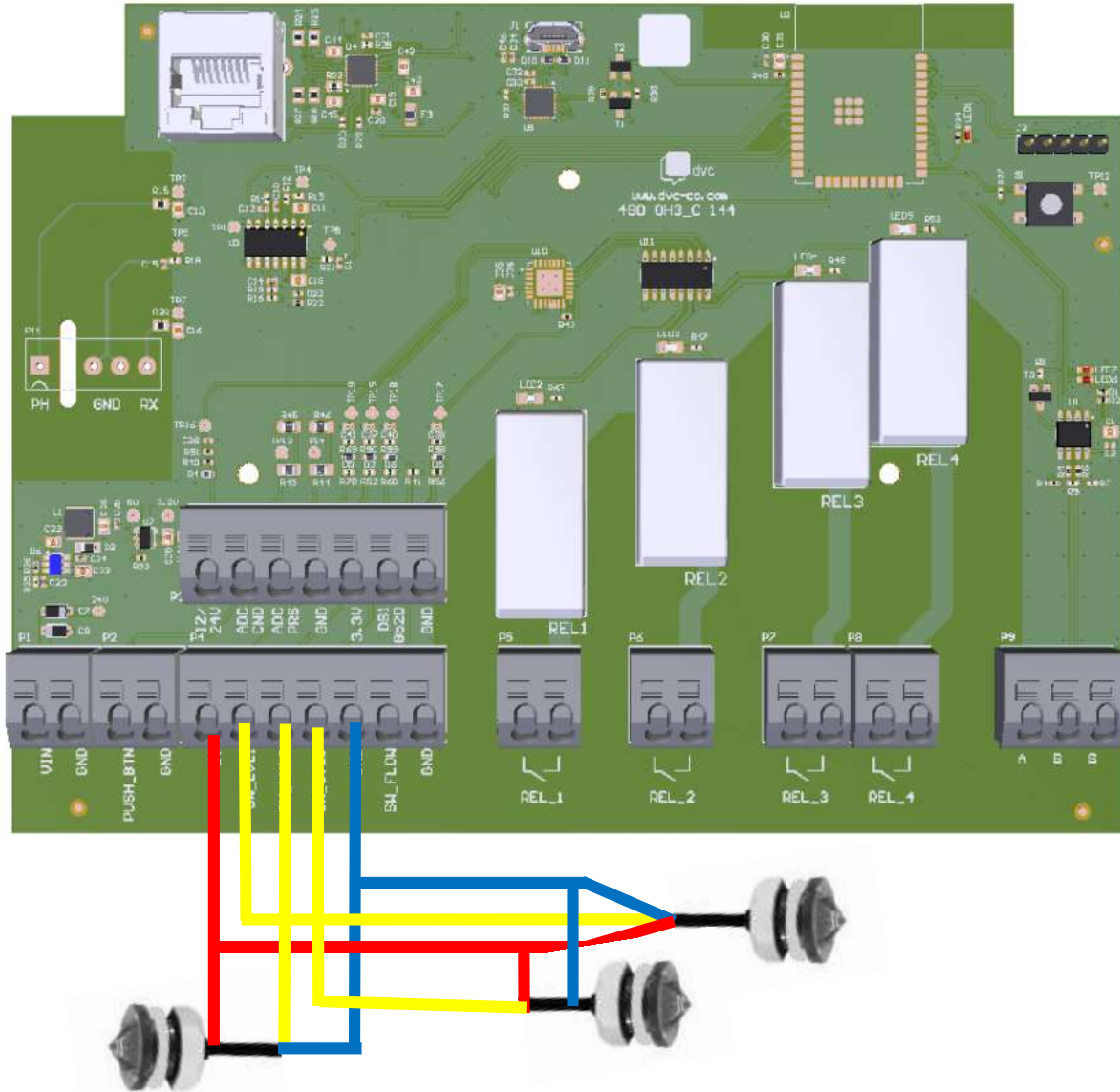
1 x Spa level switch



2 x Spa level switch



# 3 x Spa level switch



Pressure meter

